



BCH/SX Hoses and Fittings

EMEA Distribution Program



ENGINEERING YOUR SUCCESS.

Good – Better – Best – engineered for your success.

New hose classification for an easier hose selection



Parker Hose Products Division Europe supplies premier service by focussing on customer needs. To engineer customer's success by offering diversified products, we introduce a "Good, Better, Best" classification according to the quality standards and in line with the requirements of the individual applications.

Customer's choice is the key.

Good

"Good" hoses are cost-effective products – fully meeting the main parameters of the traditional international standards and exceeding them in particular requirements, such as service life, appearance, environmental aspects etc. (BCH braided hoses in combination with fitting series 16 and SX spiral hoses with MP fittings)

Good

Braided Hoses

BCH1
BCH2

New  **16**
Fitting Series
Cr6Free plated

Good

Spiral Hoses

SX35
SX42

 **73***  **77***
Fitting Series

* MP (Multipack) only

Better

The category "Better" includes hose products which are exceeding the traditional international standards in the main parameters, such as working pressure, temperature, flexibility, impulse pressure resistance etc. These are the main qualities appreciated by the customers at the Parker well known *No-Skive* hoses – *Elite* braided and Parkrimp spiral.

Better

Braided Hoses

Elite
462, 492  **46**  **48**
Fitting Series

Better

Spiral Hoses

Parkrimp
701, 731  **70**  **73**
Fitting Series

Best

Category "Best" contains GLOBALCORE hose products which are meeting or even exceeding the latest and most demanding International Standard ISO 18752. GLOBALCORE is the world's first high performance, cohesive hose and fitting range that OEMs and end users have been asking for. GLOBALCORE hoses have constant working pressures of 21.0, 28.0, 35.0 and 42.0 MPa.

Best

Braided Hoses

GLOBALCORE™  **48**
387, 487 Fitting Series

Best

Spiral Hoses

GLOBALCORE™  **77**
787, 797 Fitting Series

Good – Better – Best – engineered for your success.

Technical comparison

Good

BCH braided and **SX** spiral hoses – meeting international technical standards – newly developed for demanding small and medium OEMs and general distribution.

Better

Well known *Elite No-Skive* braided and **Parkrimp® No-Skive** spiral hoses – exceeding the standards – highly appreciated in the very demanding MRO and OEM markets.

Best

State-of-the-art **GLOBALCORE™** hose product range – exceeding the newest ISO 18752 – providing technical and economical excellence to the most demanding customers.

Medium Pressure

Size	Good			Better			Best		
	W.P. MPa	O.D. mm	B.R. mm	W.P. MPa	O.D. mm	B.R. mm	W.P. MPa	O.D. mm	B.R. mm
-4	22.5	11.5	75	28.0	11.5	75	21.0	11.5	50
-5	21.5	13.6	85	25.0	13.6	85	-	-	-
-6	18.0	15.5	90	22.5	15.5	90	21.0	15.5	65
-8	16.0	18.9	130	19.0	18.9	130	21.0	18.9	90
-10	13.0	22.2	150	15.0	22.2	150	21.0	22.2	100
-12	10.5	26.0	180	15.0	26.0	180	21.0	26.0	120
-16	8.8	33.3	230	11.0	33.3	230	21.0	33.3	150
Impulse tested at:	125 % of W. P. , 100 °C, 150 kc			125 % of W. P. , 100 °C, 300 kc			133 % of W. P. , 125 °C, 400 kc		

Size	Good			Better			Best		
	W.P. MPa	O.D. mm	B.R. mm	W.P. MPa	O.D. mm	B.R. mm	W.P. MPa	O.D. mm	B.R. mm
-4	40.0	13.4	75	42.5	13.4	75	28.0	13.4	50
-5	35.0	15.0	85	40.0	15.0	85	-	-	-
-6	33.0	17.2	90	35.0	17.2	90	28.0	17.2	65
-8	27.5	20.4	130	31.0	20.4	130	28.0	20.4	90
-10	25.0	23.9	170	28.0	23.9	160	28.0	23.9	100
-12	21.5	27.7	200	28.0	27.7	195	28.0	27.7	120
-16	16.5	35.4	250	21.0	35.4	250	28.0	35.4	150
Impulse tested at:	133 % of W. P. , 100 °C, 200 kc			133 % of W. P. , 100 °C, 400 kc			133 % of W. P. , 125 °C, 400 kc		

High Pressure

Size	Good			Better			Best		
	W.P. MPa	O.D. mm	B.R. mm	W.P. MPa	O.D. mm	B.R. mm	W.P. mm	O.D. mm	B.R. mm
-12	35.0	32.4	240	35.0*	32.2*	300*	35.0	27.9	120
-16	35.0	38.2	300	38.0	39.0	340	35.0	35.7	150
-20	35.0	46.3	420	-	-	-	35.0	44.9	210
Impulse tested at:	120 % of W. P. , 120 °C, 500 kc			133 % of W. P. , 100 °C, 800 kc			133 % of W. P. , 125 °C, 2 mc		

Size	Good			Better			Best		
	W.P. MPa	O.D. mm	B.R. mm	W.P. MPa	O.D. mm	B.R. mm	W.P. mm	O.D. mm	B.R. mm
-12	42.0	32.4	260	42.0	32.0	280	42.0	27.9	135
-16	42.0	38.2	330	-	-	-	42.0	35.7	165
-20	42.0	46.3	400	-	-	-	42.0	44.9	225
Impulse tested at:	120 % of W. P. , 120 °C, 500 kc			133 % of W. P. , 100 °C, 800 kc			133 % of W. P. , 125 °C, 2 mc		

W.P.= max. working pressure O.D.= hose O.D. B.R.= min. bend radius kc = 1000 cycles mc = Million cycles

BCH2

No-Skive

EN 857 2SC – ISO 11237

Primary Applications


Demanding medium pressure hydraulic applications in all markets

Construction

Inner Tube: Nitrile (NBR)
Reinforcement: Two high tensile steel wire braid
Cover: Synthetic rubber

Temperature Range -40 °C up to +100 °C

Exception: Air max. +70 °C
Water max. +85 °C



- *No-Skive* hose construction
- High performance
- NBR inner tube – extended fluid compatibility
- Meets specified working pressure and bend radius of EN 857 2SC
- Synthetic rubber cover compound
- Tight bending radius

Recommended Fluids

Petroleum and water-glycol based fluids, lubricating oils, air and water. For air above 1.7 MPa, the hose cover must be pin-pricked.
Consult the chemical compatibility at CAT/4400 for more detailed information.

Fitting Series



Part Number	Hose I.D.				Hose O.D. mm	Pressure Rating				min. bend radius mm	weight kg
	DN	Inch	Size	mm		max. working pressure		min. burst pressure			
						MPa	psi	MPa	psi		
BCH2-4	6	1/4	-4	6.3	13.4	40.0	5800	160.0	23200	75	0.28
BCH2-5	8	5/16	-5	7.9	15.0	35.0	5000	140.0	20000	85	0.31
BCH2-6	10	3/8	-6	9.5	17.2	33.0	4800	132.0	19200	90	0.39
BCH2-8	12	1/2	-8	12.7	20.4	27.5	4000	110.0	16000	130	0.50
BCH2-10	16	5/8	-10	15.9	23.9	25.0	3600	100.0	14400	170	0.63
BCH2-12	20	3/4	-12	19.1	27.7	21.5	3100	86.0	12400	200	0.81
BCH2-16	25	1	-16	25.4	35.4	16.5	2400	66.0	9600	250	1.06

The combination of high temperature and high pressure could reduce the hose life.

Hose layline example



SX35

No-Skive Multispiral

ISO 3862 Type R13 – Parker Specifications

Primary Applications

General high pressure hydraulic applications

Applicable Specification

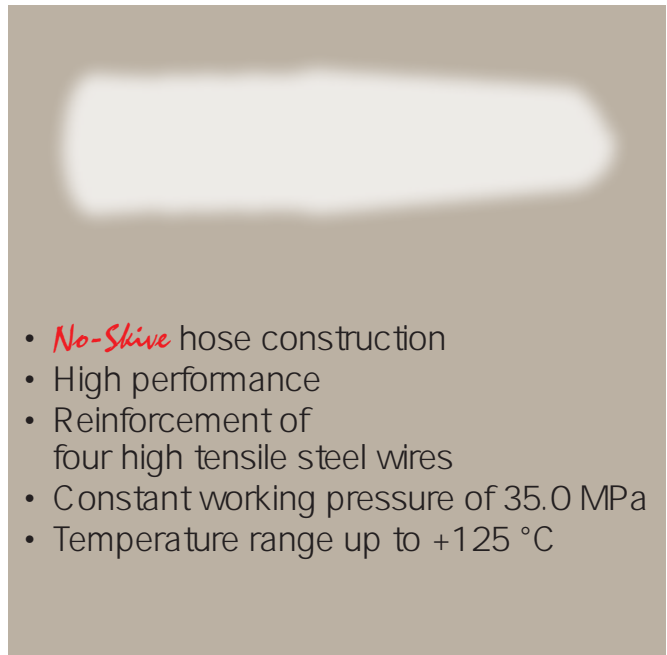
ISO 3862 Type R13 – Parker Specification

Construction

Inner Tube: Synthetic rubber
Reinforcement: Four spirals high-tensile steel wire
Cover: Synthetic rubber

Temperature Range -40 °C up to +125 °C

Exception: Air max. +70 °C
Water max. +85 °C



- *No-Skive* hose construction
- High performance
- Reinforcement of four high tensile steel wires
- Constant working pressure of 35.0 MPa
- Temperature range up to +125 °C

Recommended Fluids

Petroleum and water-glycol based fluids, lubricating oils, air and water. For air above 1.7 MPa, the hose cover must be pin-pricked.

Consult the chemical compatibility at CAT/4400 for more detailed information.

Fitting Series

(Details please find in CAT/4400)



Part Number	Hose I.D.				Hose O.D. mm	Pressure Rating				min. bend radius mm	weight kg
	DN	Inch	Size	mm		max. working pressure MPa	psi	min. burst pressure MPa	psi		
SX35-12	20	3/4	-12	19.1	32.4	35.0	5000	140.0	20000	240	1.72
SX35-16	25	1	-16	25.4	38.2	35.0	5000	140.0	20000	300	2.14
SX35-20	32	1 1/4	-20	31.5	46.3	35.0	5000	140.0	20000	420	2.96

Hose layline example

SX42

No-Skive Multispiral

ISO 3862 Type R15 – Parker Specifications

Primary Applications

General high pressure hydraulic applications

Applicable Specification

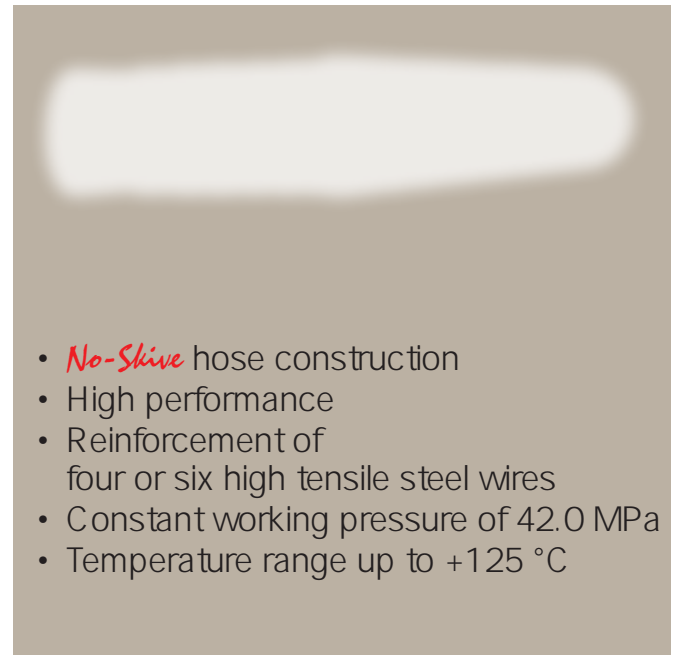
ISO 3862 Type R15 – Parker Specification

Construction

Inner Tube: Synthetic rubber
Reinforcement: Four or six spirals high-tensile steel wire
Cover: Synthetic rubber

Temperature Range -40 °C up to +125 °C

Exception: Air max. +70 °C
Water max. +85 °C



- *No-Skive* hose construction
- High performance
- Reinforcement of four or six high tensile steel wires
- Constant working pressure of 42.0 MPa
- Temperature range up to +125 °C

Recommended Fluids

Petroleum and water-glycol based fluids, lubricating oils, air and water. For air above 1.7 MPa, the hose cover must be pin-pricked.

Consult the chemical compatibility at CAT/4400 for more detailed information.

Fitting Series

(Details please find in C T/4400)

Size -12

Size -16 and -20



Part Number	Hose I.D.				Hose O.D. mm	Pressure Rating				min. bend radius mm	weight kg
	DN	Inch	Size	mm		max. working pressure MPa	psi	min. burst pressure MPa	psi		
SX42-12	20	3/4	-12	19.1	32.4	42.0	6000	168.0	24000	260	1.72
SX42-16	25	1	-16	25.4	38.2	42.0	6000	168.0	24000	330	1.74
SX42-20	32	1 1/4	-20	31.5	46.3	42.0	6000	168.0	24000	400	2.98

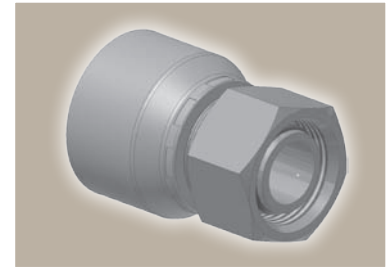
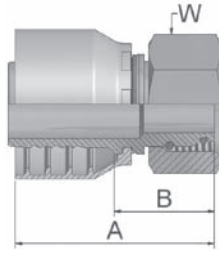
Hose layline example



CA

Female Metric 24° Light Series with O-Ring Swivel – Straight

ISO 12151-2-SWS-L – DKOL



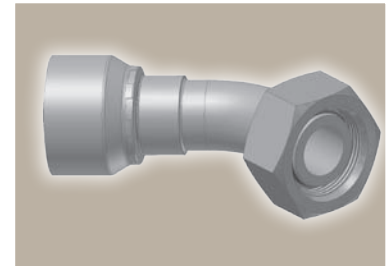
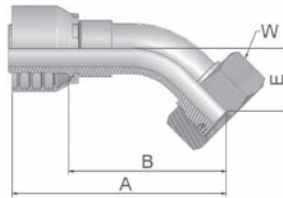
Part Number	Hose I.D.				Thread metric	Tube O.D. mm	A mm	B mm	W mm
	DN	Inch	Size	mm					
1CA16-6-4	6	1/4	-4	6.4	M12x1.5	6	46	22	14
1CA16-8-4	6	1/4	-4	6.4	M14x1.5	8	46	22	17
1CA16-10-6	10	3/8	-6	9.5	M16x1.5	10	46	23	19
1CA16-12-6	10	3/8	-6	9.5	M18x1.5	12	46	23	22
1CA16-15-8	12	1/2	-8	12.7	M22x1.5	15	50	26	27
1CA16-18-10	16	5/8	-10	15.9	M26x1.5	18	50	25	32
1CA16-22-12	19	3/4	-12	19.1	M30x2	22	56	30	36
1CA16-28-16	25	1	-16	25.4	M36x2	28	63	33	41

Hose fittings are delivered with ozone resistant Nitrile (NBR) O-ring as a standard version. Working temperature from -40 °C up to +105 °C.
Hose fittings with special O-rings (Viton or EPDM) available on request. O-ring dimensions and part-numbers see in CAT/4400.

CE

Female Metric 24° Light Series with O-Ring Swivel – 45° Elbow

ISO 12151-2-SWE -L – DKOL 45°

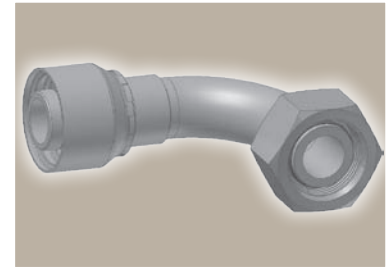
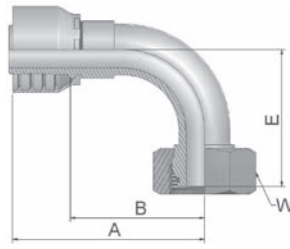


Part Number	Hose I.D.				Thread metric	Tube O.D. mm	A mm	B mm	E mm	W mm
	DN	Inch	Size	mm						
1CE16-6-4	6	1/4	-4	6.4	M12x1.5	6	70	45	19	14
1CE16-8-4	6	1/4	-4	6.4	M14x1.5	8	59	35	16	17
1CE16-12-6	10	3/8	-6	9.5	M18x1.5	12	68	45	19	22
1CE16-15-8	12	1/2	-8	12.7	M22x1.5	15	71	47	22	27
1CE16-18-10	16	5/8	-10	15.9	M26x1.5	18	75	50	23	32
1CE16-22-12	19	3/4	-12	19.1	M30x2	22	88	62	26	36
1CE16-28-16	25	1	-16	25.4	M36x 2	28	113	83	33	41

Hose fittings are delivered with ozone resistant Nitrile (NBR) O-ring as a standard version. Working temperature from -40 °C up to +105 °C.
Hose fittings with special O-rings (Viton or EPDM) available on request. O-ring dimensions and part-numbers see in CAT/4400.



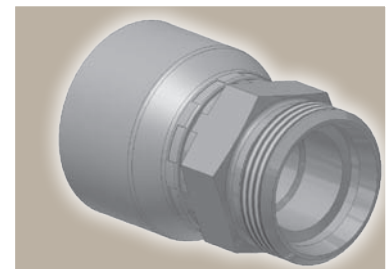
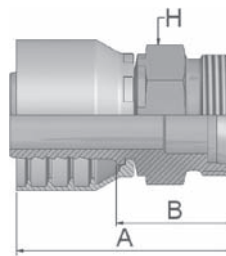
CF **Female Metric 24°
Light Series with O-Ring
Swivel – 90° Elbow**
ISO 12151-2-SWE-L – DKOL 90°



Part Number	Hose I.D.				Thread metric	Tube O.D. mm	A mm	B mm	E mm	W mm
	DN	Inch	Size	mm						
1CF16-6-4	6	1/4	-4	6.4	M12x1.5	6	57	33	33	14
1CF16-8-4	6	1/4	-4	6.4	M14x1.5	8	51	28	29	17
1CF16-12-6	10	3/8	-6	9.5	M18x1.5	12	58	35	36	22
1CF16-15-8	12	1/2	-8	12.7	M22x1.5	15	61	37	43	27
1CF16-18-10	16	5/8	-10	15.9	M26x1.5	18	66	41	45	32
1CF16-22-12	19	3/4	-12	19.1	M30x2	22	80	54	55	36
1CF16-28-16	25	1	-16	25.4	M36x2	28	101	72	71	41

Hose fittings are delivered with ozone resistant Nitrile (NBR) O-ring as a standard version. Working temperature from -40 °C up to +105 °C.
Hose fittings with special O-rings (Viton or EPDM) available on request. O-ring dimensions and part-numbers see in CAT/4400.




DO **Male Metric 24°
Light Series – Rigid
Straight**
ISO 12151-2-S-L – CEL



Part Number	Hose I.D.				Thread metric	Tube O.D. mm	A mm	B mm	H mm
	DN	Inch	Size	mm					
1D016-6-4	6	1/4	-4	6.4	M12x1.5	6	44	20	12
1D016-8-4	6	1/4	-4	6.4	M14x1.5	8	46	22	14
1D016-12-6	10	3/8	-6	9.5	M18x1.5	12	47	24	19
1D016-15-8	12	1/2	-8	12.7	M22x1.5	15	50	26	22
1D016-22-12	19	3/4	-12	19.1	M30x2	22	59	33	30
1D016-28-16	25	1	-16	25.4	M36x2	28	65	35	36

Approved **fitting serie** for hose types:

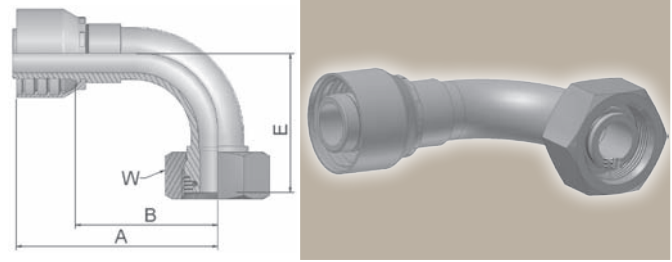
16 BCH1 | BCH2

Part Number	 Hose I.D.				 Thread	Tube	A mm	B mm	 W
	DN	Inch	Size	mm	metric	O.D. mm			mm
1C916-10-4	6	1/4	-4	6.4	M18x1.5	10	46	22	22
1C916-12-6	10	3/8	-6	9.5	M20x1.5	12	47	24	24
1C916-16-8	12	1/2	-8	12.7	M24x1.5	16	51	28	30
1C916-20-10	16	5/8	-10	15.9	M30x2	20	53	28	36
1C916-25-12	19	3/4	-12	19.1	M36x2	25	61	35	46

Part Number	DN	Inch	Size	mm	Thread	O.D. mm	A mm	B mm	W mm	
10C16-10-4	6	1/4	-4	6.4	M18x1.5	10	59	36	16	22
10C16-12-6	10	3/8	-6	9.5	M20x1.5	12	69	46	20	24
10C16-16-8	12	1/2	-8	12.7	M24x1.5	16	72	49	23	30
10C16-20-10	16	5/8	-10	15.9	M30x2	20	76	51	25	36
10C16-25-12	19	3/4	-12	19.1	M36x2	25	91	65	29	46

1C Female Metric 24° – Swivel Heavy Series with O-Ring 90° Elbow

ISO 12151-2-SWE-S – DKOS 90°

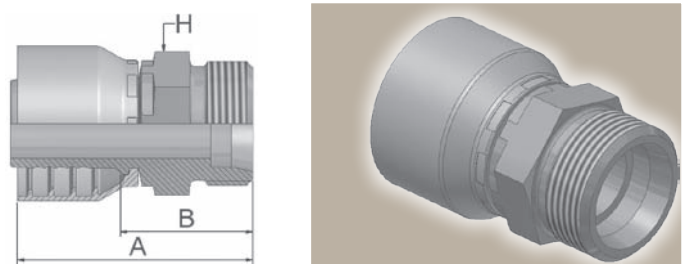


Part Number	Hose I.D.				Thread metric	Tube O.D. mm	A mm	B mm	E mm	W mm
	DN	Inch	Size	mm						
11C16-10-4	6	1/4	-4	6.4	M18x1.5	10	50	26	29	22
11C16-12-6	10	3/8	-6	9.5	M20x1.5	12	58	35	37	24
11C16-16-8	12	1/2	-8	12.7	M24x1.5	16	61	37	45	30
11C16-20-10	16	5/8	-10	15.9	M30x2	20	65	40	48	36

Hose fittings are delivered with ozone resistant Nitrile (NBR) O-ring as a standard version. Working temperature from -40 °C up to +105 °C.
Hose fittings with special O-rings (Viton or EPDM) available on request. O-ring dimensions and part-numbers see in CAT/4400.

D2 Male Metric 24° – Rigid Heavy Series – Straight

ISO 12151-2-S-S – CES

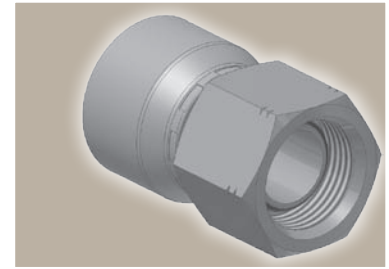
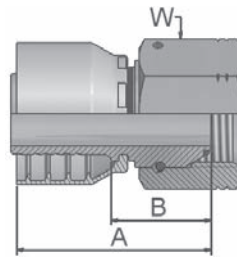


Part Number	Hose I.D.				Thread metric	Tube O.D. mm	A mm	B mm	H mm
	DN	Inch	Size	mm					
1D216-10-4	6	1/4	-4	6.4	M18x1.5	10	50	26	19
1D216-12-6	10	3/8	-6	9.5	M20x1.5	12	49	26	22
1D216-16-8	12	1/2	-8	12.7	M24x1.5	16	52	29	24
1D216-20-10	16	5/8	-10	15.9	M30x2	20	58	32	30
1D216-25-12	19	3/4	-12	19.1	M36x2	25	64	38	36

Approved **fitting serie** for hose types:

16 BCH1 | BCH2

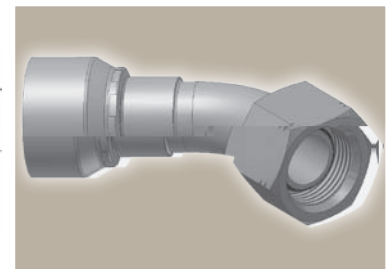
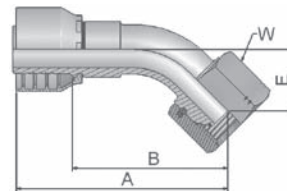
EA **BSP Swivel Female
with O-Ring (60° Cone)**
BS 5200 – ISO 12151-6 – DKOR



Part Number	Hose I.D.				Thread BSP	A mm	B mm	W mm
	DN	Inch	Size	mm				
1EA16-4-4	6	1/4	-4	6.4	1/4x19	40	17	19
1EA16-6-6	10	3/8	-6	9.5	3/8x19	43	20	22
1EA16-8-8	12	1/2	-8	12.7	1/2x14	45	22	27
1EA16-10-10	16	5/8	-10	15.9	5/8x14	46	21	30
1EA16-12-12	19	3/4	-12	19.1	3/4x14	49	23	32

Hose fittings are delivered with ozone resistant Nitrile (NBR) O-ring as a standard version. Working temperature from -40 °C up to +105 °C.
Hose fittings with special O-rings (Viton or EPDM) available on request. O-ring dimensions and part-numbers see in CAT/4400.

EB **BSP Swivel Female
with O-Ring
45° Elbow (60° Cone)**
BS 5200 – ISO 12151-6 – DKOR 45°



Part Number	Hose I.D.				Thread BSP	A mm	B mm	E mm	W mm
	DN	Inch	Size	mm					
1EB16-4-4	6	1/4	-4	6.4	1/4x19	59	36	14	19
1EB16-6-6	10	3/8	-6	9.5	3/8x19	69	46	17	22
1EB16-8-8	12	1/2	-8	12.7	1/2x14	71	48	20	27
1EB16-12-12	19	3/4	-12	19.1	3/4x14	89	63	27	32

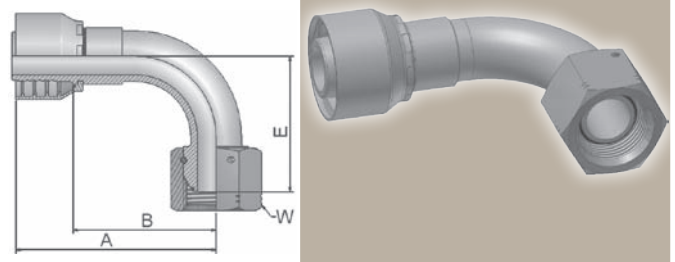
Hose fittings are delivered with ozone resistant Nitrile (NBR) O-ring as a standard version. Working temperature from -40 °C up to +105 °C.
Hose fittings with special O-rings (Viton or EPDM) available on request. O-ring dimensions and part-numbers see in CAT/4400.

Approved **fitting serie** for hose types:

16 BCH1 BCH2

EC BSP Swivel Female with O-Ring 90° Elbow (60° Cone)

BS 5200 – ISO 12151-6 – DKOR 90°

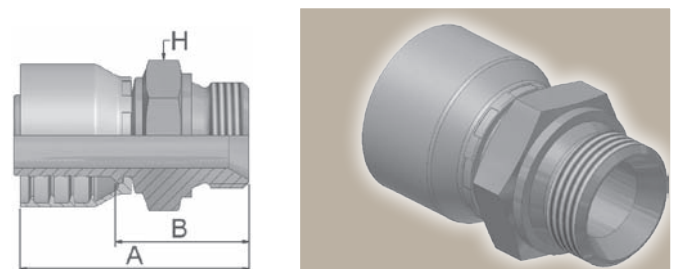


Part Number	Hose I.D.				Thread BSP	A mm	B mm	E mm	W mm
	DN	Inch	Size	mm					
1EC16-4-4	6	1/4	-4	6.4	1/4x19	50	27	24	19
1EC16-6-6	10	3/8	-6	9.5	3/8x19	60	38	33	22
1EC16-8-8	12	1/2	-8	12.7	1/2x14	63	40	40	27
1EC16-12-12	19	3/4	-12	19.1	3/4x14	79	54	55	32

Hose fittings are delivered with ozone resistant Nitrile (NBR) O-ring as a standard version. Working temperature from -40 °C up to +105 °C.
Hose fittings with special O-rings (Viton or EPDM) available on request. O-ring dimensions and part-numbers see in CAT/4400.

D9 Male BSP Parallel Pipe Rigid – Straight (60° Cone)

BS5200 – AGR

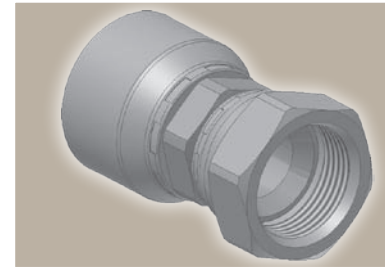
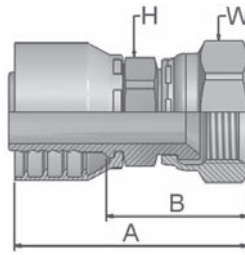


Part Number	Hose I.D.				Thread BSP	A mm	B mm	H mm
	DN	Inch	Size	mm				
1D916-4-4	6	1/4	-4	6.4	1/4x19	51	27	19
1D916-6-6	10	3/8	-6	9.5	3/8x19	54	31	22
1D916-8-8	12	1/2	-8	12.7	1/2x14	57	33	27
1D916-10-10	16	5/8	-10	15.9	5/8x14	60	35	30
1D916-12-12	19	3/4	-12	19.1	3/4x14	62	36	32

Approved **fitting serie** for hose types:

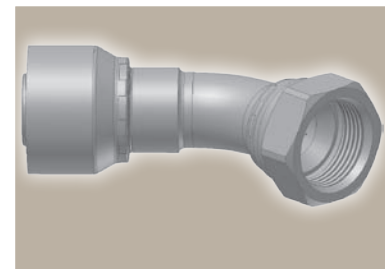
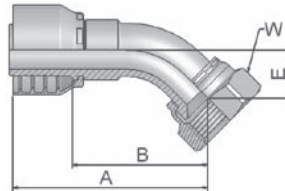
16 BCH1 | BCH2

06/68 Female – JIC 37°
SAE 45° Dual Flare
Swivel – Straight
ISO12151-5-SWS – DKJ



Part Number	Hose I.D.				Thread UNF	A mm	B mm	H mm	W mm
	DN	Inch	Size	mm					
16816-4-4	6	1/4	-4	6.4	7/16x20	52	29	14	17
10616-6-6	10	3/8	-6	9.5	9/16x18	52	30	17	19
16816-8-8	12	1/2	-8	12.7	3/4x16	56	32	22	22
16816-10-10	16	5/8	-10	15.9	7/8x14	60	35	22	27
10616-12-12	19	3/4	-12	19.1	1 1/16x12	67	41	27	32
10616-16-16	25	1	-16	25.4	1 5/16x12	75	46	32	41

37/3V Female JIC 37°
SAE 45° – Dual Flare
Swivel Female 45° Elbow
ISO 12151-5-SWE 45° – DKJ 45°

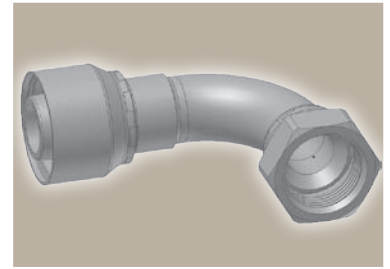
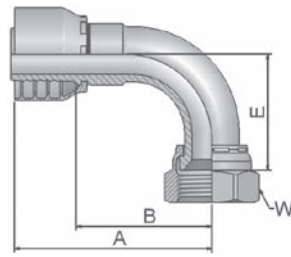


Part Number	Hose I.D.				Thread UNF	A mm	B mm	E mm	W mm
	DN	Inch	Size	mm					
13V16-4-4	6	1/4	-4	6.4	7/16x20	53	29	10	17
13716-6-6	10	3/8	-6	9.5	9/16x18	60	37	11	19
13V16-8-8	12	1/2	-8	12.7	3/4x16	61	37	15	22
13V16-10-10	16	5/8	-10	15.9	7/8x14	69	44	16	27
13716-12-12	19	3/4	-12	19.1	1 1/16x12	83	58	22	32
13716-16-16	25	1	-16	25.4	1 5/16x12	99	70	24	41

Approved **fitting serie** for hose types:

16 BCH1 BCH2

39/3W Female JIC 37°
SAE 45° – Dual Flare
Swivel Female 90° Elbow
ISO 12151-5-SWES – DKJ 90°



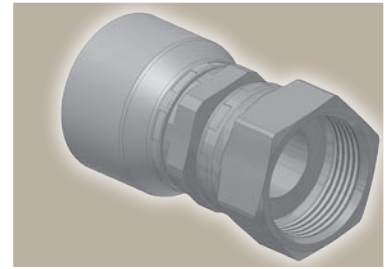
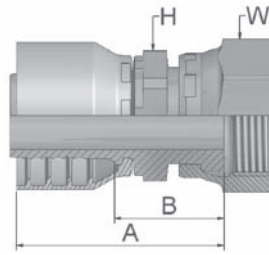
Part Number	Hose I.D.				Thread UNF	A mm	B mm	E mm	W mm
	DN	Inch	Size	mm					
13W16-4-4	6	1/4	-4	6.4	7/16x20	48	24	21	17
13916-6-6	10	3/8	-6	9.5	9/16x18	51	28	23	19
13W16-8-8	12	1/2	-8	12.7	3/4x16	55	31	29	22
13W16-10-10	16	5/8	-10	15.9	7/8x14	64	39	33	27
13916-12-12	19	3/4	-12	19.1	1 1/16x12	80	54	48	32
13916-16-16	25	1	-16	25.4	1 5/16x12	98	68	56	41

Approved **fitting serie** for hose types:

16 BCH1 | BCH2

JC Female ORFS Swivel – Straight Short

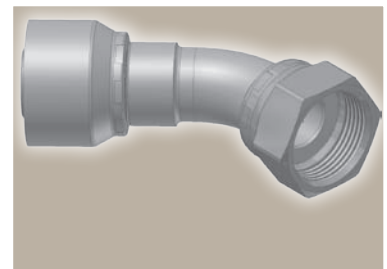
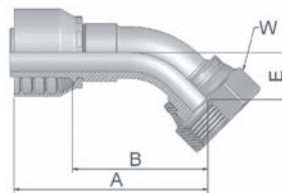
ISO 12151-1 – SWSA
SAE J516 – ORFS



Part Number	Hose I.D.				Thread UNF	A mm	B mm	H mm	W mm
	DN	Inch	Size	mm					
1JC16-4-4	6	1/4	-4	6.4	9/16x18	46	22	14	17
1JC16-6-6	10	3/8	-6	9.5	11/16x16	43	21	17	22
1JC16-8-8	12	1/2	-8	12.7	13/16x16	46	22	22	24
1JC16-10-10	16	5/8	-10	15.9	1x14	51	26	24	30
1JC16-12-12	19	3/4	-12	19.1	1 3/16x12	55	29	30	36
1JC16-16-16	25	1	-16	25.4	1 7/16x12	63	33	36	41

J7 Female ORFS – Swivel 45° Elbow

ISO 12151-1 – SWE 45°
SAE J516 – ORFS 45°



Part Number	Hose I.D.				Thread UNF	A mm	B mm	E mm	W mm
	DN	Inch	Size	mm					
1J716-4-4	6	1/4	-4	6.4	9/16x18	54	31	10	17
1J716-6-6	10	3/8	-6	9.5	11/16x16	54	31	11	22
1J716-8-8	12	1/2	-8	12.7	13/16x16	61	38	15	24
1J716-10-10	16	5/8	-10	15.9	1x14	67	42	16	30
1J716-12-12	19	3/4	-12	19.1	1 3/16x12	83	57	21	36
1J716-16-16	25	1	-16	25.4	1 7/16x12	99	69	24	41

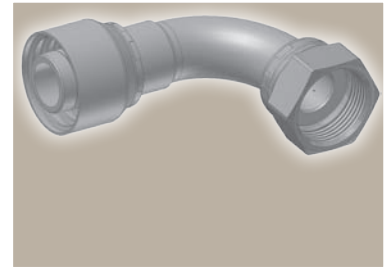
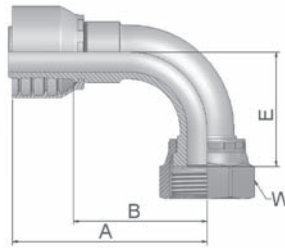
Approved **fitting serie** for hose types:

16 BCH1 BCH2

J9

Female ORFS – Swivel 90° Elbow – Short Drop

ISO 12151-1 – SWES
SAE J516 – ORFS 90°

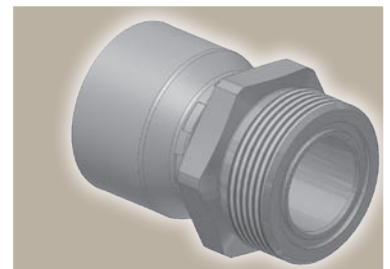
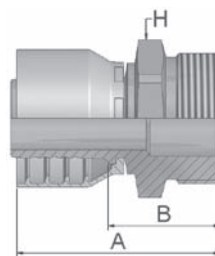


Part Number	Hose I.D.				Thread UNF	A mm	B mm	E mm	W mm
	DN	Inch	Size	mm					
1J916-4-4	6	1/4	-4	6.4	9/16x18	52	29	21	17
1J916-6-6	10	3/8	-6	9.5	11/16x16	52	29	23	22
1J916-8-8	12	1/2	-8	12.7	13/16x16	55	32	29	24
1J916-10-10	16	5/8	-10	15.9	1x14	65	39	32	30
1J916-12-12	19	3/4	-12	19.1	1 3/16x12	82	54	48	36
1J916-16-16	25	1	-16	25.4	1 7/16x12	98	68	56	41

JM

ORFS Male

ISO 12151-1-S – SAE J516



Part Number	Hose I.D.				Thread UNF	A mm	B mm	H mm
	DN	Inch	Size	mm				
1JM16-4-4	6	1/4	-4	6.4	9/16x18	46	22	17
1JM16-6-6	10	3/8	-6	9.5	11/16x16	47	24	19
1JM16-8-8	12	1/2	-8	12.7	13/16x16	51	27	22
1JM16-10-10	16	5/8	-10	15.9	1x14	57	32	27
1JM16-12-12	19	3/4	-12	19.1	1 3/16x12	61	35	32
1JM16-16-16	25	1	-16	25.4	1 7/16x12	67	37	41

Approved **fitting serie** for hose types:

16 BCH1 | BCH2

Series 73

DIN – Metric

C9



Female Metric 24° – Swivel Heavy Series with O-Ring Straight
ISO 12151-2-SWS-S – DKOS

0C



Female Metric 24° – Swivel Heavy Series with O-Ring 45° Elbow
ISO 12151-2 – SWE-S – DKOS 45°

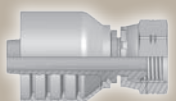
1C



Female Metric 24° – Swivel Heavy Series with O-Ring 90° Elbow
ISO 12151-2-SWE-S – DKOS 90°

BSP

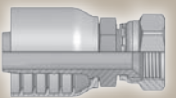
92



Female BSP Parallel Pipe Swivel – Straight (60° Cone)
BS5200-A – DKR

SAE

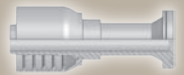
06



Female JIC 37° – Swivel Straight
ISO12151-5-SWS – DKJ

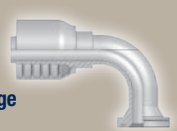
Flange

6A



ISO 6162-2-Flange Straight
ISO 12151-3-S-S – SFS (42.0 MPa/ 6000 psi)

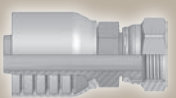
6N



ISO 6162-2-Flange 90° Elbow
ISO 12151-3 – E-S – SFS 90° (42.0 MPa/ 6000 psi)

ORFS

JC

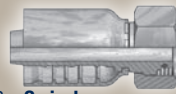


Female ORFS Swivel – Straight Short
ISO 12151-1 – SWSA SAE J516 – ORFS

DIN – Metric

Series 77

C9



Female Metric 24° – Swivel Heavy Series with O-Ring Straight
ISO 12151-2-SWS-S – DKOS

0C



Female Metric 24° – Swivel Heavy Series with O-Ring 45° Elbow
ISO 12151-2 – SWE-S – DKOS 45°

1C



Female Metric 24° – Swivel Heavy Series with O-Ring 90° Elbow
ISO 12151-2-SWE-S – DKOS 90°

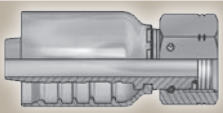
D2



Male Metric 24° – Rigid Heavy Series – Straight
ISO 12151-2-S-S – CES

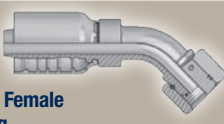
BSP

EA




BSP Swivel Female with O-Ring (60° Cone)
BS 5200 – ISO 12151-6 – DKOR

EB



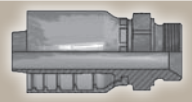
BSP Swivel Female with O-Ring 45° Elbow (60° Cone)
BS 5200 – ISO 12151-6 – DKOR 45°

EC



BSP Swivel Female with O-Ring 90° Elbow (60° Cone)
BS 5200 – ISO 12151-6 – DKOR 90°

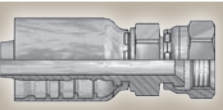
D9



Male BSP Parallel Pipe Rigid – Straight (60° Cone)
BS5200 – AGR

SAE

06



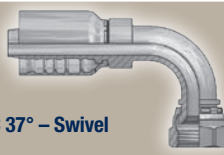
Female JIC 37° – Swivel Straight
ISO12151-5-SWS – DKJ

37



Female JIC 37° – Swivel 45° Elbow
ISO 12151-5-SWE 45° – DKJ 45°

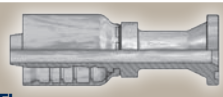
39



Female JIC 37° – Swivel 90° Elbow
ISO 12151-5-SWES – DKJ 90°

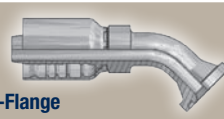
Flange

15/4A



ISO 6162-1-Flange Straight
ISO 12151-3-S-L – SFL (35.0 MPa/ 5000 psi)

17/4F



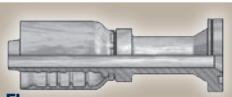
ISO 6162-1-Flange 45° Elbow
ISO 12151-3 – E45S – L – SFL 45° (35.0 MPa/ 5000 psi)

19/4N




ISO 6162-1-Flange 90° Elbow
ISO 12151-3-E-L – SFL 90° (35.0 MPa/ 5000 psi)

6A




ISO 6162-2-Flange Straight
ISO 12151-3-S-S – SFS (42.0 MPa/ 6000 psi)

6F



ISO 6162-2-Flange 45° Elbow – Heavy Series
ISO 12151-3 – E45-S – SFS 45° (42.0 MPa/ 6000 psi)

6N

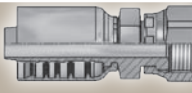


ISO 6162-2-Flange 90° Elbow
ISO 12151-3 – E-S – SFS 90° (42.0 MPa/ 6000 psi)

Technical Details for these fittings you will find in C T/4400

ORFS

JC




Female ORFS Swivel – Straight Short
ISO 12151-1 – SWSA SAE J516 – ORFS

J7



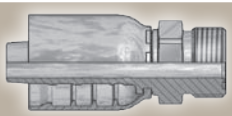
Female ORFS – Swivel 45° Elbow
ISO 12151-1 – SWE 45° SAE J516 – ORFS 45°

J9



Female ORFS – Swivel 90° Elbow – Short Drop
ISO 12151-1 – SWES SAE J516 – ORFS 90°

JM



ORFS Male
ISO 12151-1-S – SAE J516

KarryKrimp® 1, KarryKrimp® 2, Parkrimp® 2 Crimping Presses

Portable or bench-mounted easy-to-use hose assembly machines; an optimal alternative for your own assembling of a wide range of Parker *No-Skive* hose and fittings.

Ideal for workshops, repair shops and mobile service vehicles.

Parkrimp® *No-Skive*
the problem solver for
Your **DownTime**

KarryKrimp® 1 82CE-061L

KarryKrimp® 2 85CE-061L

Parkrimp® 2 83CE-083U

The KarryKrimp® 1 crimps the following hose types.

1 and 2 steel wire hose
up to size -20

The KarryKrimp® 2 crimps the following hose types with both steel and stainless steel fittings

1 and 2 steel wire hose
up to size -20

4 layer multispiral hose
up to size -16

Compact Spiral hose
up to size -12

The Parkrimp® 2 crimps the following hose types with both steel and stainless steel fittings

1 and 2 steel wire hose
up to size -32

4 and 6 layer multispiral hose
up to size -32

Compact Spiral hose
up to size -32

Fitting Series

16, 46, 48

Dimensions:
H 760 x W 335 x D 330 mm

Weight: 28 kg

Fitting Series

16, 46, 48, 70, 73, 77

Dimensions:
H 805 x W 340 x D 350 mm

Weight: 46 kg

Fitting Series

16, 46, 48, 70, 73, 77

Dimensions:
H 1170 x W 530 x D 985 mm

Weight: 370 kg

Parkrimp® Colour-Coded Die Sets

- Mistake-proof crimping diameter setup
- A chain link keeping the segments together - no loss, mismatch or misplacement
- Ideal 360° round crimp for longer impulse life
- Easy selection by color



Parker Worldwide

Europe, Middle East, Africa

AE – United Arab Emirates,
Dubai

Tel: +971 4 8127100
parker.me@parker.com

AT – Austria, Wiener Neustadt
Tel: +43 (0)2622 23501-0
parker.austria@parker.com

AT – Eastern Europe, Wiener
Neustadt
Tel: +43 (0)2622 23501 900
parker.easteurope@parker.com

AZ – Azerbaijan, Baku
Tel: +994 50 2233 458
parker.azerbaijan@parker.com

BE/LU – Belgium, Nivelles
Tel: +32 (0)67 280 900
parker.belgium@parker.com

BG – Bulgaria, Sofia
Tel: +359 2 980 1344
parker.bulgaria@parker.com

BY – Belarus, Minsk
Tel: +48 (0)22 573 24 00
parker.poland@parker.com

CH – Switzerland, Etoy
Tel: +41 (0)21 821 87 00
parker.switzerland@parker.com

CZ – Czech Republic, Klecany
Tel: +420 284 083 111
parker.czechrepublic@parker.com

DE – Germany, Kaarst
Tel: +49 (0)2131 4016 0
parker.germany@parker.com

DK – Denmark, Ballerup
Tel: +45 43 56 04 00
parker.denmark@parker.com

ES – Spain, Madrid
Tel: +34 902 330 001
parker.spain@parker.com

FI – Finland, Vantaa
Tel: +358 (0)20 753 2500
parker.finland@parker.com

FR – France, Contamine s/Arve
Tel: +33 (0)4 50 25 80 25
parker.france@parker.com

GR – Greece, Athens
Tel: +30 210 933 6450
parker.greece@parker.com

HU – Hungary, Budaörs
Tel: +36 23 885 470
parker.hungary@parker.com

IE – Ireland, Dublin
Tel: +353 (0)1 466 6370
parker.ireland@parker.com

IL – Israel
Tel: +39 02 45 19 21
parker.israel@parker.com

IT – Italy, Corsico (MI)
Tel: +39 02 45 19 21
parker.italy@parker.com

KZ – Kazakhstan, Almaty
Tel: +7 7273 561 000
parker.easteurope@parker.com

NL – The Netherlands, Oldenzaal
Tel: +31 (0)541 585 000
parker.nl@parker.com

NO – Norway, Asker
Tel: +47 66 75 34 00
parker.norway@parker.com

PL – Poland, Warsaw
Tel: +48 (0)22 573 24 00
parker.poland@parker.com

PT – Portugal
Tel: +351 22 999 7360
parker.portugal@parker.com

RO – Romania, Bucharest
Tel: +40 21 252 1382
parker.romania@parker.com

RU – Russia, Moscow
Tel: +7 495 645-2156
parker.russia@parker.com

SE – Sweden, Spånga
Tel: +46 (0)8 59 79 50 00
parker.sweden@parker.com

SK – Slovakia, Banská Bystrica
Tel: +421 484 162 252
parker.slovakia@parker.com

SL – Slovenia, Novo Mesto
Tel: +386 7 337 6650
parker.slovenia@parker.com

TR – Turkey, Istanbul
Tel: +90 216 4997081
parker.turkey@parker.com

UA – Ukraine, Kiev
Tel: +48 (0)22 573 24 00
parker.poland@parker.com

UK – United Kingdom, Warwick
Tel: +44 (0)1926 317 878
parker.uk@parker.com

ZA – South Africa, Kempton Park
Tel: +27 (0)11 961 0700
parker.southafrica@parker.com

North America

CA – Canada, Milton, Ontario
Tel: +1 905 693 3000

US – USA, Cleveland
Tel: +1 216 896 3000

Asia Pacific

AU – Australia, Castle Hill
Tel: +61 (0)2-9634 7777

CN – China, Shanghai
Tel: +86 21 2899 5000

HK – Hong Kong
Tel: +852 2428 8008

IN – India, Mumbai
Tel: +91 22 6513 7081-85

JP – Japan, Tokyo
Tel: +81 (0)3 6408 3901

KR – South Korea, Seoul
Tel: +82 2 559 0400

MY – Malaysia, Shah Alam
Tel: +60 3 7849 0800

NZ – New Zealand, Mt Wellington
Tel: +64 9 574 1744

SG – Singapore
Tel: +65 6887 6300

TH – Thailand, Bangkok
Tel: +662 186 7000

TW – Taiwan, Taipei
Tel: +886 2 2298 8987

South America

AR – Argentina, Buenos Aires
Tel: +54 3327 44 4129

BR – Brazil, Sao Jose dos Campos
Tel: +55 800 727 5374

CL – Chile, Santiago
Tel: +56 2 623 1216

MX – Mexico, Toluca
Tel: +52 72 2275 4200

European Product Information Centre
Free phone: 00 800 27 27 5374

(from AT, BE, CH, CZ, DE, DK, EE, ES, FI,
FR, IE, IL, IS, IT, LU, MT, NL, NO, PL, PT, RU,
SE, SK, UK, ZA)



Parker Hannifin Ltd.

Tachbrook Park Drive
Tachbrook Park,
Warwick, CV34 6TU
United Kingdom
Tel.: +44 (0) 1926 317 878
Fax: +44 (0) 1926 317 855
parker.uk@parker.com
www.parker.com