

DSX-F

HOW TO ORDER DSX-F CONNECTORS

DSX

SERIES PREFIX _____

CLASS _____

F: Front release front removable contacts, inserts without interfacial seal**K:** Front release front removable contacts, inserts with interfacial seal

SHELL SIZE _____

1: One gang shell**2:** Two gang shell**3:** Three gang shell**4:** Four gang shell

SHELL TYPE _____

R: Receptacle**A:** PlugTERMINATION STYLE ^[5] _____**X:** Without contacts**V:** Wire wrap two levels**W:** Wire wrap three levels**Y:** PC tail contactCONTACT ARRANGEMENT ^[1, 2 & 5] _____To be chosen among the following: ^[4]

26-40-45-57-67-33C4-106-81C3

CONTACT TYPE _____

S: Socket**P:** Pin

GANG B _____

GANG C _____

GANG D _____

MODIFICATION CODE _____

See pages 7-11 to 7-16 for selection.

POLARIZATION CODE ^[3] _____

See pages 7-17 to 7-20 for selection.

*For technical characteristics please see page 7-5.***Notes***1. For mixed contact arrangements, order coax contacts separately see contacts available on pages 7-24 to 7-26. Coax contacts are rear release rear removable.**2. For 33C4 and 67 contact arrangements, size 16 contacts cavities are for front release front removable contacts. Size 16 contacts are to be ordered separately.**3. Without polarization code the connector is delivered with the polarizing system unassembled.**Polarization code 00: the connector is delivered without polarizing system.**Polarization code from 01 to 216: the connector is delivered with polarization hardware assembled as defined by code.**4. Contact arrangement 26 and 40 available only in class F connector version.**5. Gang A*

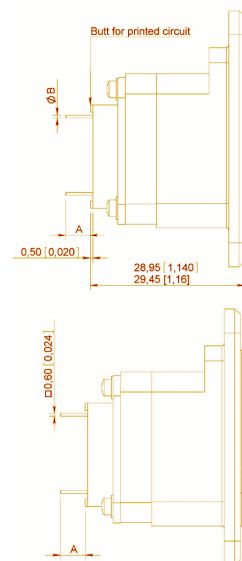
DSX-F

CONTACTS

CONTACTS WITH PC TAIL SIZES 22, 20 HD & 16

Contacts are delivered installed in the connector.

CONTACT SIZE	CONTACT ARRANGEMENT	PIN	SOCKET	INS/EXT TOOL	DIMENSIONS MM (INCH)	
					A	B
22	81C3-106	-	620361	282500	5.95/6.75 (0.234/0.265)	0.6 +/-0.03 (0.023)
20HD	40-45-67-33C4-57	616220	-	282503	4.3/5.1 (0.169/0.200)	
16 ⁽¹⁾	26-67-33C4	616235	-	282504	3.55/4.32 (0.140/0.170)	Max. 1 (0.039)
		616235010	-		10.20/11 (0.400/0.433)	
		616234	-			



SIZE 8 PIN QUADRAx CONTACTS

PART NUMBER	CONTACT TERMINATION	DIMENSION X (MM INCH)	INS/EXT TOOL
620176008	Y	7.20/6.40 90.283/0.2520	282549009

CONTACTS WITH WIRE WRAP POST SIZES 22 & 20 HD

Contacts are delivered installed in the connector. For 67 and 33C4 contact arrangements, front release front removable size 12 and 16 contacts are not delivered with the connector. They must be ordered separately and chosen among size 16 PC tail contacts and 616326 size 16 solder cup contact (rear extension from insert: 4.4/5.2 (0.173/0.204)).

CONTACT SIZE	AWG	CONTACT ARRANGEMENT	PIN	SOCKET	INS/EXT TOOL	DIMENSIONS A MM (INCH)
22	26 28 30	106	-	620351 (2 Wraps Levels)	282500	9.45/10.45 (0.372/0.412)
				620352 (3 Wrap Levels)		12.75/13.75 (0.502/0.541)
20 HD	26 28 30	40-45-67-33C4-57	616222 (2 Wraps Levels)	-	282503	10/11 (0.394/0.433)
			616224 (3 Wrap Levels)			13.3/14.3 (0.523/0.563)

COAXIAL CRIMP CONTACTS FOR 33C4 CONTACT ARRANGEMENTS SIZE 5

These coaxial contacts are rear release rear removable and designed to be installed in 33C4 and 81C3 contact arrangement class F or K. They must be ordered separately.

CONTACT SIZE	CONTACT ARRANGEMENT	CABLE	PIN	SOCKET	CENTER CONTACT			OUTER BODY		
					CRIMPING TOOL	POSITIONER	SEL.	CRIMPING TOOL	DIE	HEX
5	33C4 81C3	Microdot 250.39.37	616126	-	282281 (M22550/ 2-01)	282974	6	282293 (M22520/ 5-01)	282246 (M22520/ 5-05)	B
		RG 178 KX 21	616127	-						

EN4531-101 (ABS 1379) ADAPTER FOR SIZE 5 CAVITY

Radiall offers a unique solution to equip your DSX connectors with EN4531 fiber optic contacts. The adapter will turn a ARINC 404 size 5 cavity into a fiber optic link, using EN4531-101 fiber optic contacts.

EN4531-101 adapter for size 5 cavity is available for DSX F connectors with inserts 33C4 and 81C3 only, see page 7-28.

Notes

1. Front release front removable size 16 contacts PC tail termination are installed only for 26 contact arrangement (which is fitted with 616235 contacts). For 67 and 33C4, contact arrangements front release front removable size 16 contacts must be ordered separately

HOW TO ORDER DSX-DATA BUS CONNECTORS

DSX

SERIES PREFIX _____

CLASS _____

N: Non-environmental (without grommet and interfacial seal)

E: Environmental (with grommet and interfacial seal)

T: Connector with interfacial seal on insert with protruding contacts only

SHELL SIZE _____

1: One gang shell

2: Two gang shell

3: Three gang shell

4: Four gang shell

SHELL TYPE _____

R: Receptacle

A: Plug

GANG A BUS CONTRACT ARRANGEMENT ^[1] _____

GANG B CONTRACT ARRANGEMENT _____

MODIFICATION CODE _____

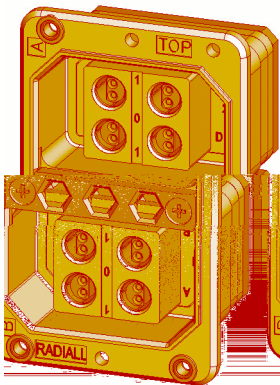
See pages 7-11 to 7-16 for selection.

POLARIZATION CODE _____

See pages 7-17 to 7-20 for selection.

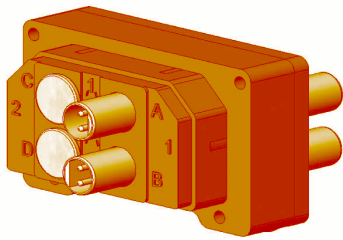
For technical characteristics please see pages 7-5.

For any additional information ask for the RP2667 DSX Data Bus from Radiall.



Notes

1. Data bus contact arrangements have no interfacial seal and no rear grommet.

INSERT NAME	NUMBER OF CONTACTS	INSERT NAME	NUMBER OF CONTACTS
B2TP1- H2TP1	 2 x Twinax		

DIMENSIONS

B2TP, H2TP, B4TP & H4TP AIRCRAFT CONNECTOR

The aircraft connector is comprised of two sub assemblies

1. A plug shell fitted with an insert incorporating 2 (B2TP or H2TP) or 4 (B4TP or H4TP) twinax pin contacts.
2. One or two connection plugs depending on the number of BUS lines (B2 or B4). If there are two BUS lines (B2TP or H2TP) the two twinax contacts and the connection plug can be installed either in position 1 (B2TP1 or H2TP1) or in position 2 (B2TP2 or H2TP2).

The difference between B2TP1 and H2TP1, B2TP2 and H2TP2, B4TP and H4TP depends on the shielded twisted pairs cable that is used.

For Fileca F2709/12 cable the designation used are B2TP1, B2TP2, B4TP.

Description: differential impedance = $75 \pm 5\Omega$

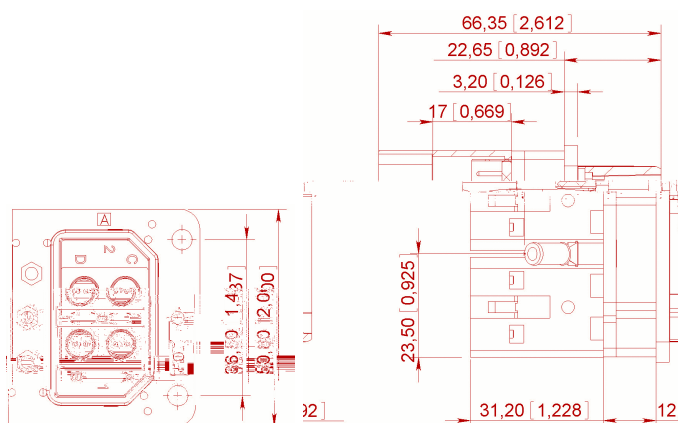
Shielded twisted pair (each conductor = AWG 20) Outer diameter = 5.35 mm (0.206 inch max)

For Fileca F2709/9 cable the designation used are H2TP1, H2TP2, H4TP.

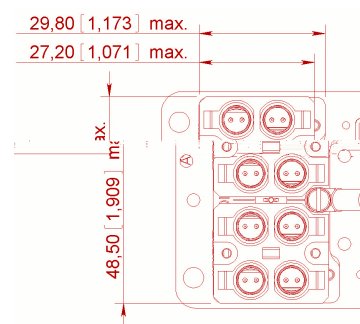
Description: differential impedance = $75 \pm 5\Omega$

Shielded twisted pair (each conductor = AWG 22) Outer diameter = 4.80 mm (0.189 inch max)

MATING FACE

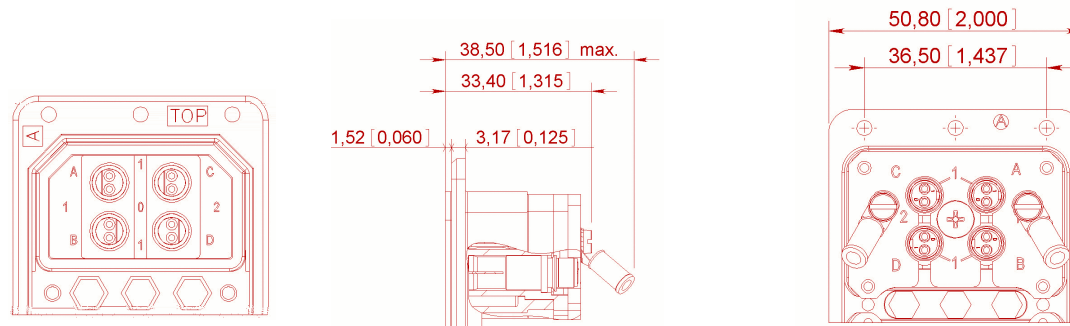


WIRING REAR FACE



B2TP, H2TP, B4TP & H4TP EQUIPMENT CONNECTOR

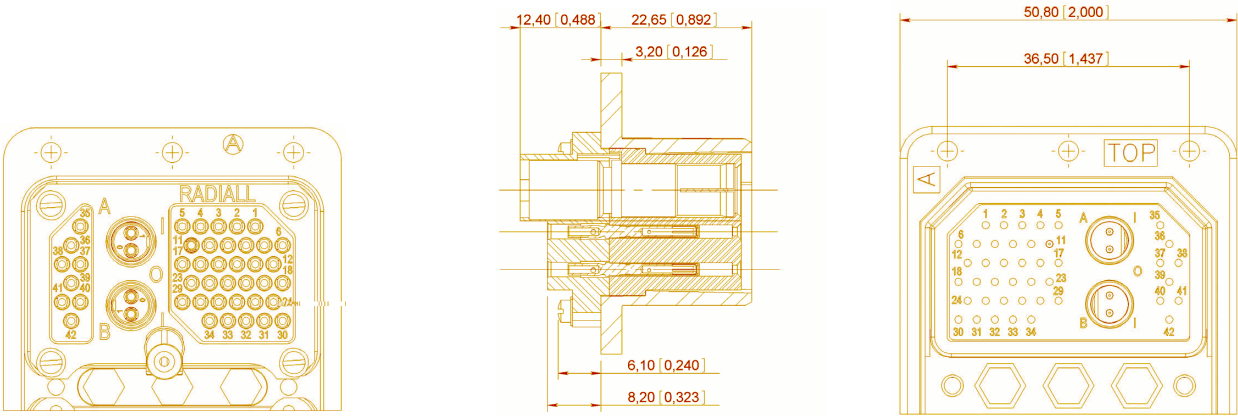
The equipment connector is comprised of one receptacle shell fitted with an insert incorporating 2 (B2S) or 4 (B4S) twinax socket contacts.



DSX-DATA Bus

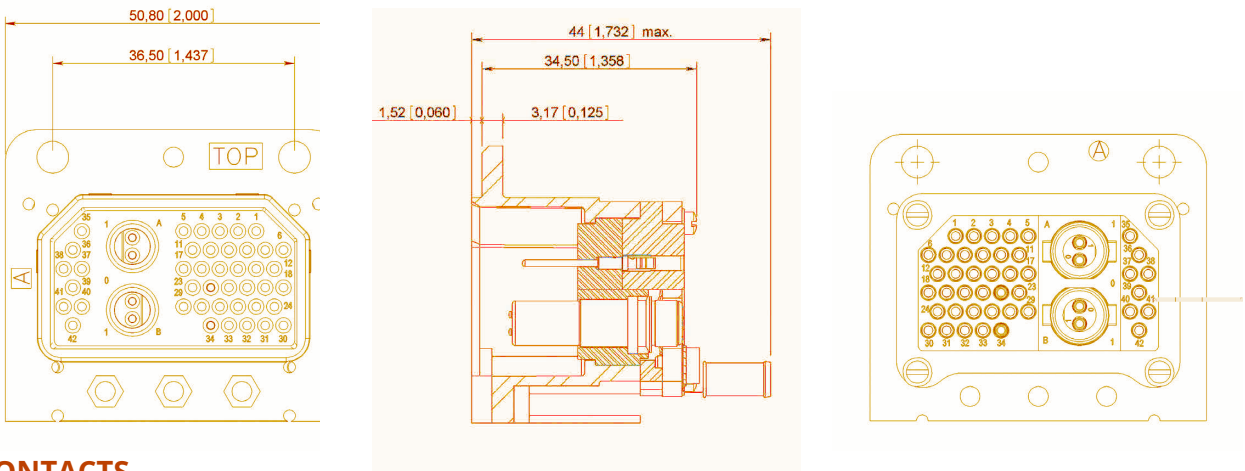
S42B2P AIRCRAFT CONNECTOR

The aircraft connector is comprised of a plug shell fitted with a S42B2P insert.



S42B2P EQUIPMENT CONNECTOR

The equipment connector is comprised of a receptacle shell fitted with a S42B2P insert.



CONTACTS
TWINAX

CONTACT SIZE	CABLE	PIN	SOCKET	CENTER CONTACT			OUTER BODY	
				CRIMPING TOOL	POSITIONER	SEL.	CRIMPING TOOL	DIE
B2TP B4TP	F2709/12	-	616090	282281 (M22520/2-01)	282959	7	282293 (M22520/5-01)	282248 OCETA M1001
H4TP H2TP 42B2S	F2709/9	-	616091			8		
B4S B2S	AWG 20 AWG 22 AWG 24	-	616092			7 6 5	N/A	
42B2P	AWG 20 AWG 22 AWG 24	616192	-			7 6 5		

DSX-ARINC 404 Shell Type B

HOW TO ORDER ARINC 404 SHELL TYPE B CONNECTORS

DSX

SERIES PREFIX _____

SHELL SIZE _____

- 1: One gang shell
 2: Two gang shell
 3: Three gang shell
 4: Four gang shell

SHELL TYPE _____

- G: Receptacle
 H: Plug

GANG A-CONTACT ARRANGEMENT _____

See available contact arrangements on pages 7-49 and 7-50.

TERMINATION STYLE ^[2 & 3] _____

- X: Without contacts
 S: Crimp ^[1]
 Z: Fixed solder cup
 K: Wire wrap one level ^[5]
 V: Wire wrap two levels ^[5]
 W: Wire wrap three levels ^[5]
 Y: PC tail contact ^[5]

GANG B _____

GANG C _____

GANG D _____

MODIFICATION CODE _____

See pages 7-11 to 7-16 for selection.

POLARIZATION CODE ^[4] _____

See pages 7-17 to 7-20 for selection.

CONTACT ARRANGEMENT CODE TABLE

	00	8	13	26	40	45	57	67	106	32C2	32C4	40C1	C2	C3	C8	D8
Insert for Pin Contacts	10	12	44	14	16	18	20	22	24	26	40	28	34	36	30	38
Insert for Socket Contacts	11	13	45	15	17	19	21	23	25	27	41	29	35	37	31	39

Notes

1. If you need to use reduced crimp barrel contacts, use code X and order contacts separately.
2. For C2, C3 and C8 contact arrangements which include coax contacts, use termination code X and order coax contacts separately.
3. For mixed layout 32C2, 32C4 and 40C1, the connector is delivered with signal and power contacts but without coax contacts. Order coaxial contacts separately.
4. Without polarization code: the connector is delivered with polarizing system unassembled.
 Polarization code 00: the connector is delivered without polarizing system.
 Polarization code from 01 to 216: the connector is delivered with the polarization hardware assembled as defined by code.
5. For contact arrangement 67 and 32C4 with K, V, W or Y termination styles, size 16 contacts are crimp contacts shipped loose with the connector.

DSX-ARINC 404 Shell Type B

TECHNICAL CHARACTERISTICS

MATERIALS

DESCRIPTION	MATERIAL	PLATING
Shell	Aluminium Alloy	Cadmium Yellow Chromate ^[1]
Insert	Thermosetting Resin	-
Metallic Insert	Aluminium Alloy	Cadmium Clear Chromate
Rear Spacer	Silicone Rubber	-
Retention Clip	Copper Alloy	-
Contact	Copper Alloy	Gold over Nickel Under Plate
Insert Retention Plate	Aluminium Alloy	Yellow Anodized
Insert Retention Plate with Attaching Tabs	Aluminium Alloy	Cadmium Yellow Chromate ^[1]
Polarizing Posts	Stainless Steel	-
Polarizing Keys	Zinc Alloy	Cadmium Yellow Chromate ^[1]
Polarizing Keys Retention Plate	Aluminium Alloy	Yellow Anodised ^[1]
Screws, Washers, Clinch-Nuts	Corrosion Resistant Steel	-

ELECTRICAL CHARACTERISTICS

They are the same as those described for SAE AS81659 connectors on page 7-5.

MECHANICAL & ENVIRONMENTAL CHARACTERISTICS

These characteristics are the same as described in SAE AS81659, with the exception that the altitude moisture test is not performed. This test is replaced by a moisture resistance test performed according to method 1002.2 type II of MIL-STD-1344A.

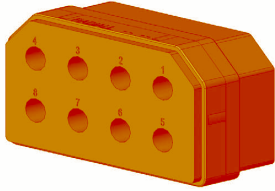
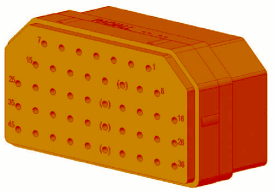
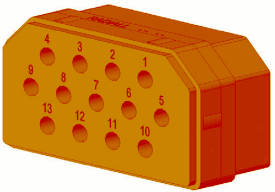
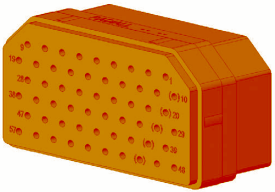
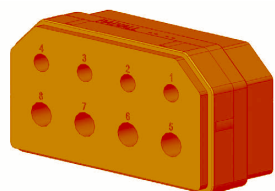
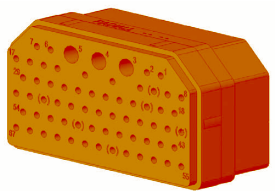
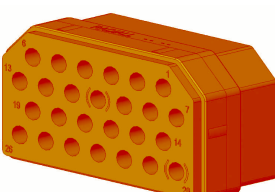
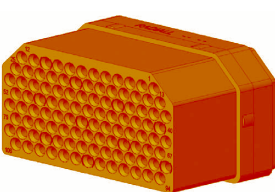
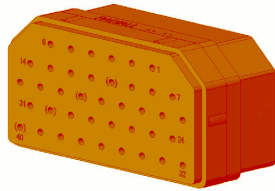
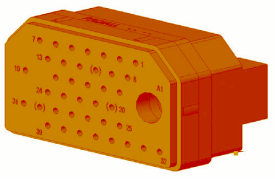
Notes

1. More platings are available, see descriptions in modification codes

DSX-ARINC 404 Shell Type B

CONTACT ARRANGEMENTS

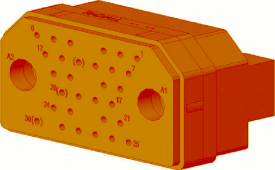
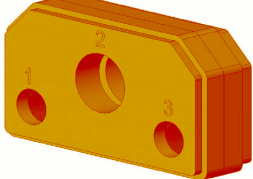
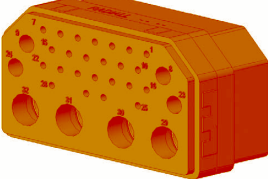
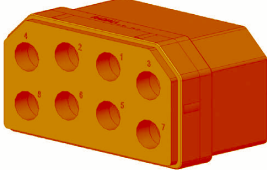
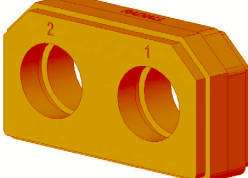
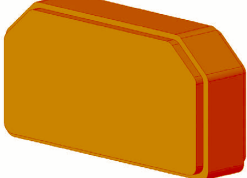
Pin insert mating side is shown below in the table.

INSERT NAME	NUMBER OF CONTACTS	DWV	TERMINATION AVAILABILITY	INSERT NAME	NUMBER OF CONTACTS	DWV ^[1]	TERMINATION AVAILABILITY
8	 8 × #12	1,500 V-60 Hz	S-Z	45	 45 × #20	1,500 V-60 Hz	For Pin S-Z-Y-K-V-W For Socket S-Z-W
13	 13 × #16	1,800 V-60 Hz	S-Z For Pin	57	 57 × #20	1,500 V-60 Hz	For Pin S-Z-Y-K-V-W For Socket S-Z-W
D8	 4 × #16 4 × #12	1,500 V-60 Hz	S-Z	67	 64 × #20 HD 3 × #16	1,000 V-60 Hz	For Pin S-Z-Y-K-V-W For Socket S-Z-W
26	 26 × #16	1,500 V-60 Hz	For Pin S-Z-K For Socket S-Z	106	 106 × #22	1,000 V-60 Hz	S-Y-V-W
40	 40 × #20	1,500 V-60 Hz	For Pin S-Z-Y-K-V-W For Socket S-Z-W	40C1	 1 × #5 (Coax) 39 × #20	1,500 V-60 Hz	For Pin S-Z-Y-K-V-W For Socket S-Z-W

Notes

1. Dielectric withstanding voltage

DSX-ARINC 404 Shell Type B

INSERT NAME	NUMBER OF CONTACTS	DWV	TERMINATION AVAILABILITY	INSERT NAME	NUMBER OF CONTACTS	DWV	TERMINATION AVAILABILITY
32C2	 2 × #5 (Coax) 30 × #20	1,500 V-60 Hz 1,000 V for Coax Cavity	For Pin S-Z-Y-K-V-W For Socket S-Z-W	C3	 2 × #7 (Coax) 1 × #3	Metallic	S
32C4	 4 × #9 (Coax) 4 × #16 24 × #20	1,500 V-60 Hz 1,000 V for Coax Cavity	For Pin S-Z-Y-K-V-W For Socket S-Z-W	C8	 8 × #9 (Coax)	1,000 V-60 Hz	S
C2	 2 × #1 (Coax)	Metallic	S	00		-	Dummy Insert

DSX-ARINC 404 Shell Type B

SIGNAL AND POWER CRIMP CONTACTS SIZES 22, 20 HD,16 & 12

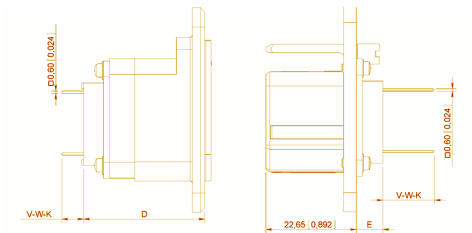
CONTACT SIZE	WIRE				PIN RADIAL P/N MIL P/N	SOCKET RADIAL P/N MIL P/N				

DSX-ARINC 404 Shell Type B

CONTACTS WITH WIRE WRAP POST SIZES 22, 20 HD & 20

Wire wrap contacts are delivered installed in the connector. Connectors with wire wrap contacts have no wire separator. For 32C4 and 67 contact arrangements, size 16 contacts are delivered in crimp termination and are shipped loose with the connector.

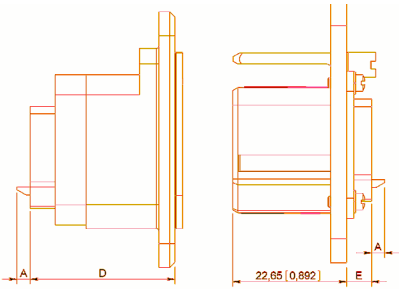
CONTACT SIZE	AWG	CONTACT ARRANGEMENT	PIN	SOCKET	EXTRACTION TOOL	DIMENSIONS MM (INCH)								
						D	E	K (1 WRAP)	V (2 WRAP)	W (3 WRAP)				
22	26 28 30	106	610203 (2 Wrap Levels)	610303 (2 Wrap Levels)	282948	25.25/25.75 (0.0994/1.013)	1.55/1.75 (0.061/0.069)	-	10/11 (0.394/0.433)	12.50/13.50 (0.492/0.531)				
			610204 (3 Wrap Levels)	610304 (3 Wrap Levels)										
20 HD	26 28 30	67	610217 (1 Wrap Level)	-		28.8/29.2 (1.133/1.150)	5.40/5.80 (0.212/0.228)	6.35/7.35 (0.250/0.289)	9.35/10.35 (0.368/0.407)	11.85/12.85 (0.466/0.506)				
		32C4	610215 (2 Wrap Levels)			29.70/30.30 (1.169/1.192)	5.40/5.80 (0.212/0.228)	6.95/8.25 (0.273/0.325)	9.95/11.25 (0.391/0.443)	12.45/13.75 (0.490/0.541)				
			610214 (3 Wrap Levels)											
20	26 28 30	40-45-57 32C2-40C1	610228 (1 Wrap Level)	-	282949	28.55/29.15 (1.147/1.124)	5.40/5.80 (0.212/0.228)	6.95/8.25 (0.273/0.325)	9.95/11.25 (0.391/0.443)	12.60/13.8 (0.496/0.543)				
			610225 (2 Wrap Levels)											
			610224 (3 Wrap Levels)											



SOLDER CUP CONTACT SIZES 20HD, 20, 16 & 12

Solder cup contacts are fixed contacts delivered installed in the connector. Connectors with solder cup contacts have no wire separator.

CONTACT SIZE	CONTACT ARRANGEMENT	STRIPPING LENGTH	DIMENSIONS MM (INCH)		
			A	D	E
20 HD	67	2.5 (0.098)	3 (0.118)	29.20/29.80 (1.149/1.173)	5.40/5.80 (0.212/0.228)
	32C4			29.70/30.30 (1.169/1.192)	
20	40-45-57- 32C2-40C1	5 (0.197)	4.5 (0.177)	28.55/29.15 (1.124/1.147)	
16	26-67			29.20/29.80 (1.149/1.173)	
	32C4			29.70/30.30 (1.169/1.192)	
12	8-D8			28.55/29.15 (1.124/1.147)	



DSX-ARINC 404 Shell Type B

THERMOCOUPLE CONTACT SIZES 22 & 20HD

Refer to page 7-22.

FIBER OPTIC TERMINI SIZES 16 & 12

Refer to page 7-23.

COAXIAL CRIMP CONTACT SIZE 1

CONTACT SIZE	CONTACT ARRANGEMENT	CABLE	PIN	SOCKET	CENTER CONTACT			OUTER BODY		
					CRIMPING TOOL	POSITIONER	SEL.	CRIMPING TOOL	DIE	HEX
1	C2	UT 141 RG 402	616005	-	Solder Contact					
		RG 58 RG 141 KX 15	616005 Right Angle	-	Solder Contact			282293 (M22520/5-01)	282246 (M22520/5-05)	A
		RG 214 RG 225	-	610108				-	282247 (M22520/5-61)	A
		SMA	616009	-	SMA Termination					

COAXIAL CRIMP CONTACT SIZE 3

CONTACT SIZE	CONTACT ARRANGEMENT	CABLE	PIN	SOCKET	CENTER CONTACT			OUTER BODY		
					CRIMPING TOOL	POSITIONER	SEL.	CRIMPING TOOL	DIE	HEX
3	C3	RG 214 RG 225	-	610118	Solder			282293 (M22520/5-01)	282247 (M22520/5-61)	A
		UT 141 RG 402	616014	-	Solder Contact					

Dielectric Withstanding Voltage at Sea Level: 1,500 Vrms

COAXIAL CRIMP CONTACT SIZE 5

CONTACT SIZE	CONTACT ARRANGEMENT	CABLE	PIN	SOCKET	CENTER CONTACT			OUTER BODY		
					CRIMPING TOOL	POSITIONER	SEL.	CRIMPING TOOL	DIE	HEX
5	32C2 40C1	RG 58 RG 141 KX 15	610120	610020001	Solder			282293 (M22520/5-01)	282246 (M22520/5-05)	A
		RG 142 RG 223 KX 23	610122	610022001						B
		RG 316 KX 22	610126	610026						
		KX 21 DT	610127	-						
		RG 178	610119	-						
		UT 085	610123	-						
		UT 141	616009	-	Solder					

Extraction Tool: 282946 (M81969/28-01)

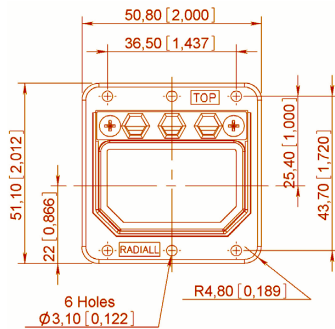
Notes

For other cables, please consult Radiall.

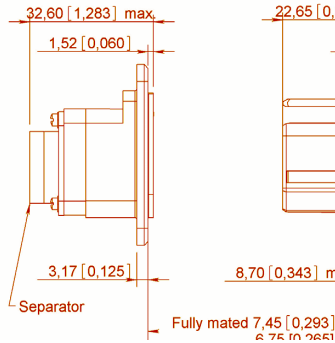
DSX-ARINC 404 Shell Type B

DIMENSIONS

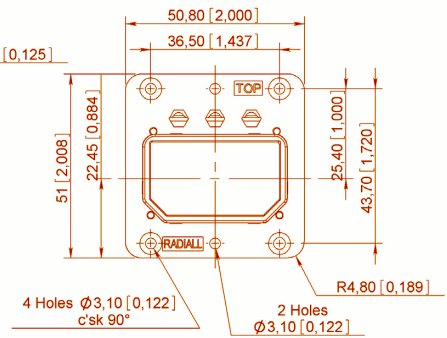
SHELL SIZE 1



RECEPTACLE



PLUG



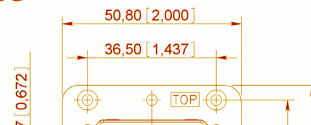
SHELL SIZE 2



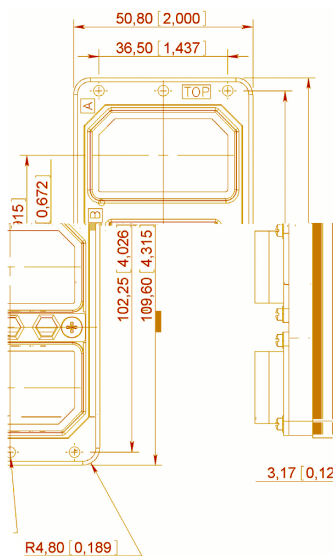
RECEPTACLE



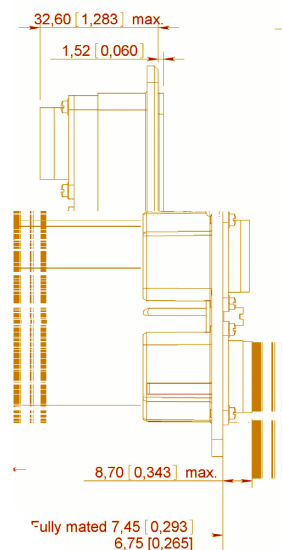
PLUG



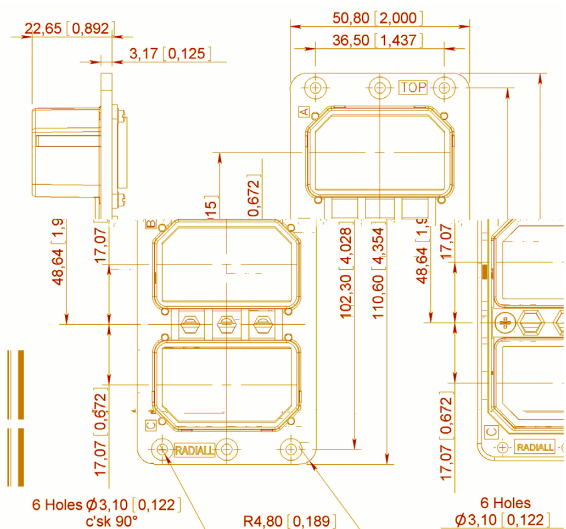
SHELL SIZE 3



RECEPTACLE

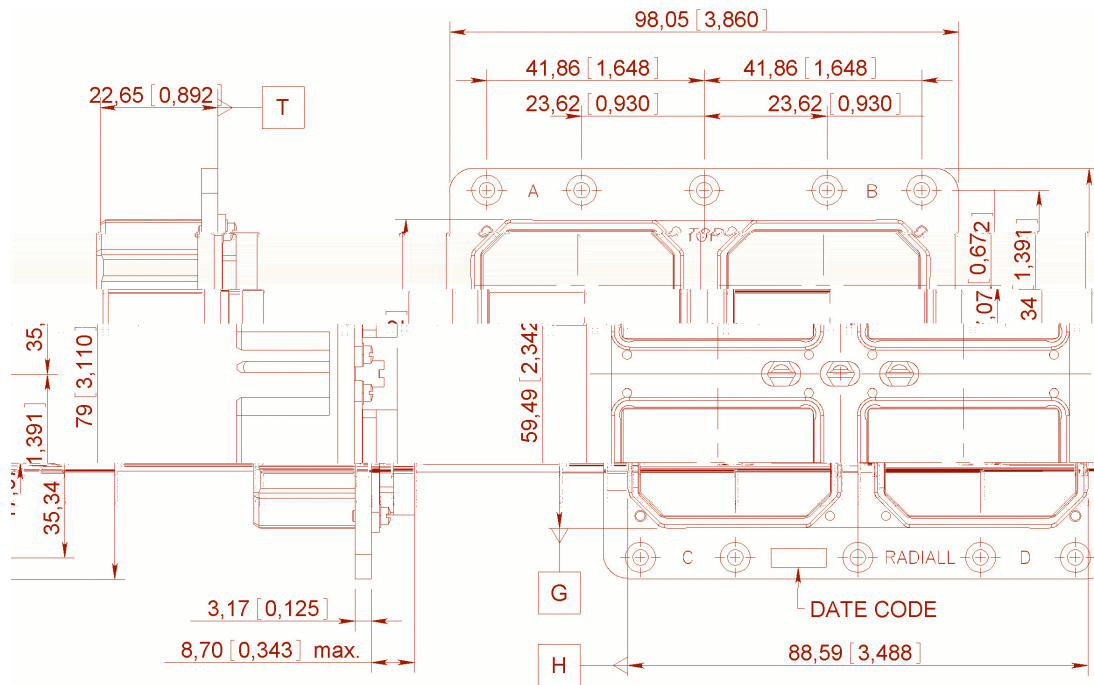


PLUG

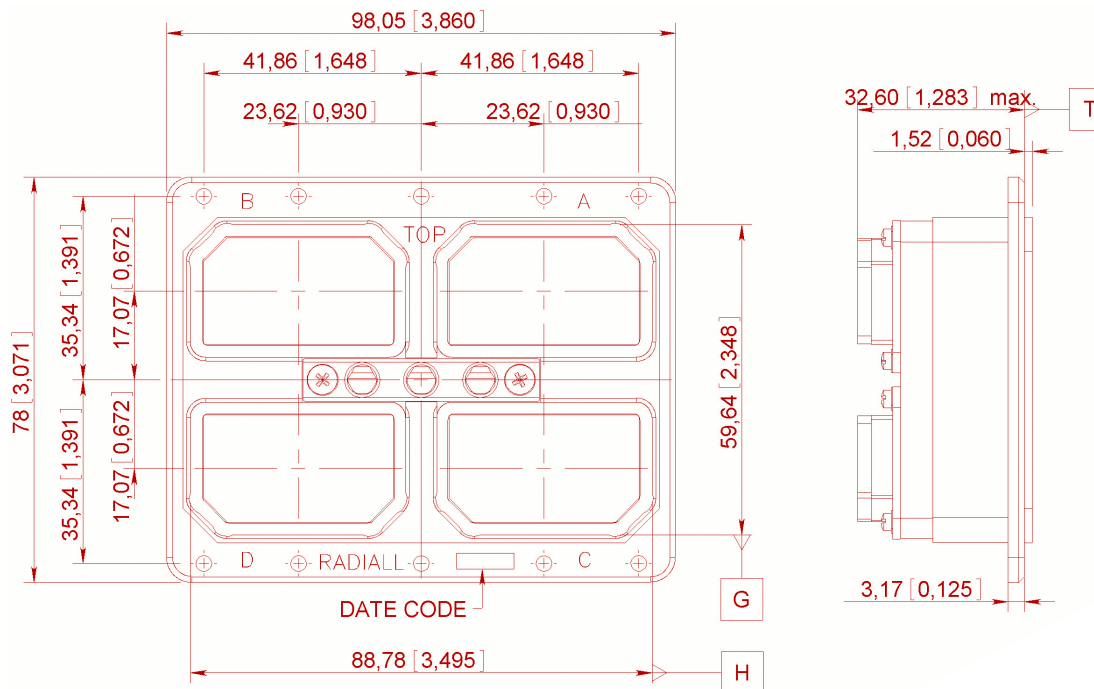


SHELL SIZE 4

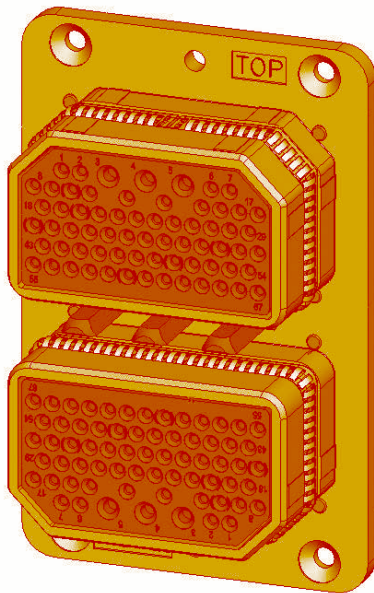
PLUG



RECEPTACLE



INTRODUCTION



EMI/RFI acts directly on electronics systems whether by conduction mode through the input or output cables or by radiation (coupling).

Electronics equipment is particularly vulnerable to interference and can be disturbed or damaged by it. The serious consequences which may result, make it essential to protect such installations.

The first stage in protection is to install the equipment in a shielded cabinet which protects it from some interference; particularly those occurring by radiation. At the connector level that means to use metallic shells to have a good mass conduction between the equipment box and the rack.

To meet these requirements Radiall offers plug connectors for rack which are fitted with grounding spring fingers.

DSX SAE AS81659 and DSX-ARINC 404 shell type B in sizes 1,2,3, and 4, fitted with grounding fingers are available.

These connectors are interchangeable and intermatable with the standard ones.

PART NUMBERING

The part numbering system applies to plug shells only.

To establish the part number of a DSX EMI/RFI connector, simply add the letter "G" after the letter which defines the shell type in the DSX SAE AS81659 or Arinc 404 shell type B standard part number.

Examples of part numbers:

- DSXN2PGS404SS45S0001
- DSX2HG41S19S0001

TECHNICAL CHARACTERISTICS

The technical characteristics are the same as those of SAE AS81659 and Arinc 404 shell type B connectors except for the following.

- **Shell-to-Shell Conductivity:** 2.5 mΩ max. Measured according to method 3007 of MIL-STD-1344A.
- **Shielding Effectiveness:** >70 dB at 4 GHz. Measured according to method 3008 of MIL-STD-1344A.

MATERIALS

DESCRIPTION	MATERIAL	PLATING
Grounding Spring Fingers	Copper Alloy	Nickel

ELECTRICAL, MECHANICAL & ENVIRONMENTAL CHARACTERISITCS

MATERIALS

HOW TO ORDER-ARINC 404 SHELL TYPE A CONNECTORS

DSX

SERIES PREFIX _____

ONE SIZE _____

1: One gang shell

SHELL TYPE _____

E: Receptacle

F: Plug

CONTACT ARRANGEMENT _____

See table below and page 7-49.

TERMINATION STYLE ^[2 & 3] _____

X: Without contacts

S: Crimp ^[1]

Z: Fixed solder cup

K: Wire wrap one level ^[4]V: Wire wrap two levels ^[4]W: Wire wrap three levels ^[4]Y: PC tail contact ^[4]

MODIFICATION CODE _____

See page 7-60.

CONTACT ARRANGEMENT CODE TABLE

	00	8	13	26	40	45	57	67	106	32C2	32C4	40C1	C2	C3	C8	D8
Insert for Pin Contacts	10	12	44	14	16	18	20	22	24	26	40	28	34	36	30	38
Insert for Socket Contacts	11	13	45	15	17	19	21	23	25	27	41	29	35	37	31	39

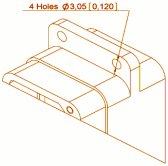
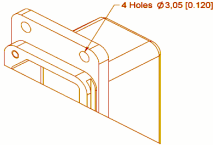
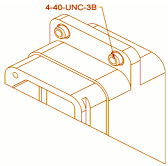
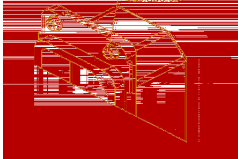
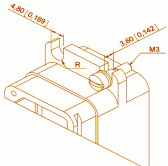
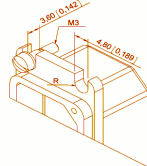
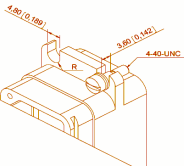
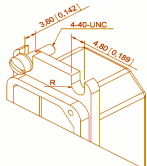
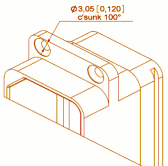
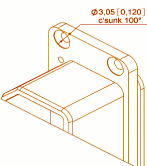
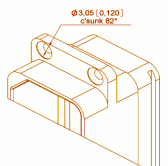
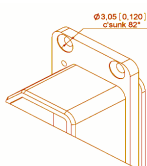
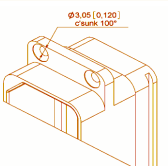
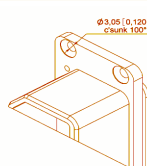
Notes

1. If you need to use reduced crimp barrel contacts, use code X and order contacts separately.
2. For C2, C3 and C8 contact arrangements which include coax contacts, use termination code X and order coax contacts separately.
3. For mixed layout 32C2, 32C4 and 40C1, the connector is delivered with signal and power contacts but without coax contacts.
Order coaxial contacts separately.
4. For contact arrangement 67 and 32C4 with K, V, W or Y termination styles, size 16 contacts are crimp contacts shipped loose with the connector.

DSX-ARINC 404 Shell Type A

MODIFICATION CODE

Dimensions mm (inch)

CODE	RECEPTACLE SHELL		PLUG SHELL	
00		4 Holes Ø3.05 (0.120)		4 Holes Ø3.05 (0.120)
01		Four 4.40 UNC 3B Clinch Nuts		Four 4.40 UNC 3B Clinch Nuts
03		4 Mounting Slots 4.80 (0.189) Wide + Four M3 Shouldered Screws + 4 Washers		4 Mounting Slots 4.80 (0.189) Wide + Four M3 Shouldered Screws + 4 Washers
04		4 Mounting Slots 4.80 (0.189) Wide + Four 4.40 UNC Shouldered Screws + 4 Washers		4 Mounting Slots 4.80 (0.189) Wide + Four .40 UNC Shouldered Screws + 4 Washers
05		4 Holes 3.05 (0.120) dia c'sunk 100°		4 Holes 3.05 (0.120) dia c'sunk 100°
06		4 Holes 3.05 (0.120) dia c'sunk 82°		4 Holes 3.05 (0.120) dia c'sunk 82°
07		4 Holes 3.05 (0.120) dia c'sunk 100° + a Dust Cap		4 Holes 3.05 (0.120) dia c'sunk 100° + a Dust Cap

DSX-ARINC 404 Shell Type A

CONTACT ARRANGEMENTS

They are the same inserts as those used in Arinc 404 shell type B connectors (see page 7-49).

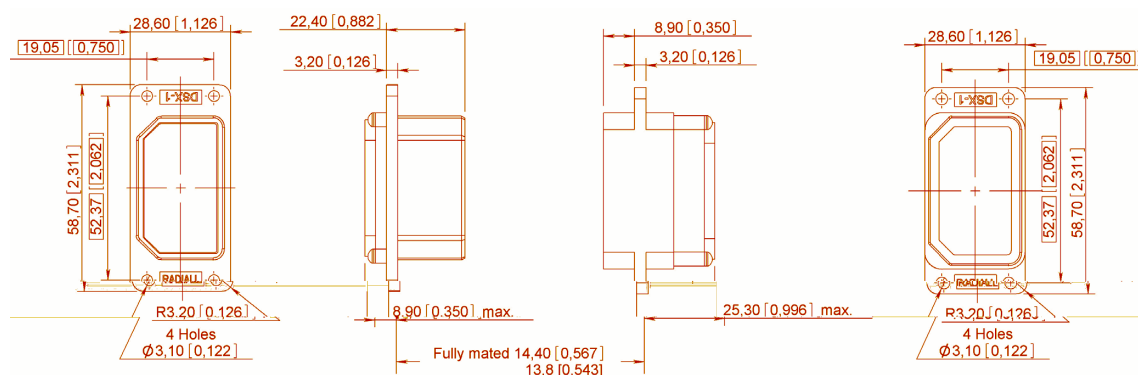
CONTACTS

The contacts used are those shown on page 7-51 to 7-54.

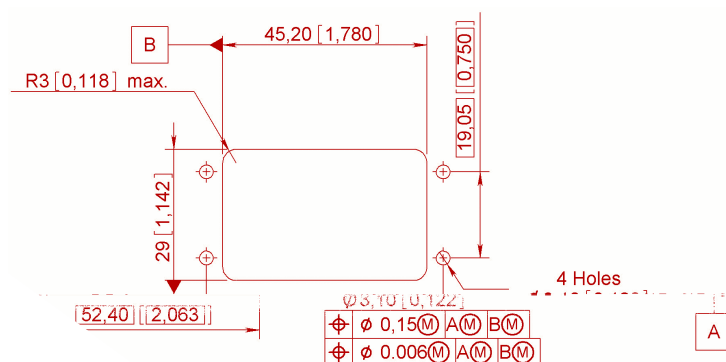
ACCESSORIES

Refer to page 7-54

DIMENSIONS



PANEL CUT-OUT

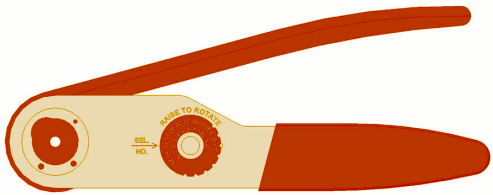


DSX-ARINC 404 Shell Type A

TOOLS

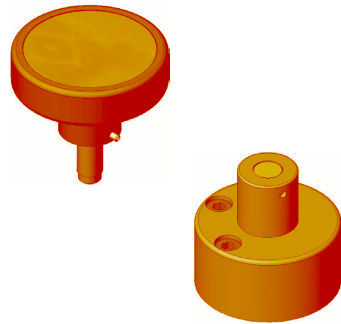
CRIMPING TOOLS

PART NUMBER	MIL SPEC P/N
282281	M22520/2-01
282291	M22520/1-01
282296	DANIELS M300BT
282293	M22520/5-01



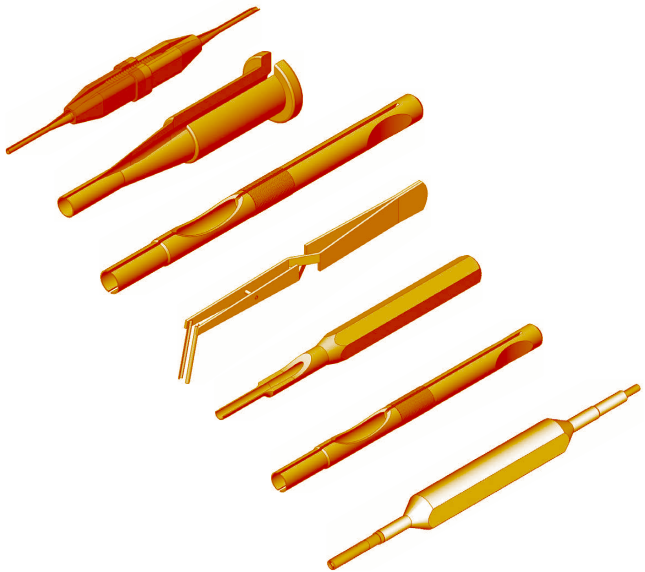
POSITIONERS

PART NUMBER	MIL SPEC P/N
282970	M22520/2-23
282971	M22520/2-08
282974	-
282550	Daniels K345
-	-
282972	M22520/1-02
282579	M22520/1-11
282557	-



INSERTION/EXTRACTION TOOLS

PART NUMBER	MIL SPEC P/N
282885	M81969/1-01
282886	M81969/1-02
282546	M81969/1-03
282547	M81969/28-02
282943	-
282946	M81969/28-01
282890	-
282892	-
282891	-
282929	-
282945	-
282500	-
282503	-
282504	-
282948	-
282949	-



DIE

PART NUMBER	MIL SPEC P/N
282246	M22520/5-05
282247	M22520/5-61
282248	OCETA M1001
282236	M22520/5-45

