

Q Rivet

Structural breakstem fasteners with an internal interference lock and a weatherproof feature.



Key features and benefits

- Interference lock formed by a splined stem provides powerful locking strength and hole filling
- Weatherproof fastener because the splined stem plugs the entire length of the shell
- High shear and tensile strength
- All stainless steel option for high corrosion resistance and applications requiring elevated temperatures

Specifications

Sizes:

3.2 mm to 6.4 mm
(1/8" to 1/4")

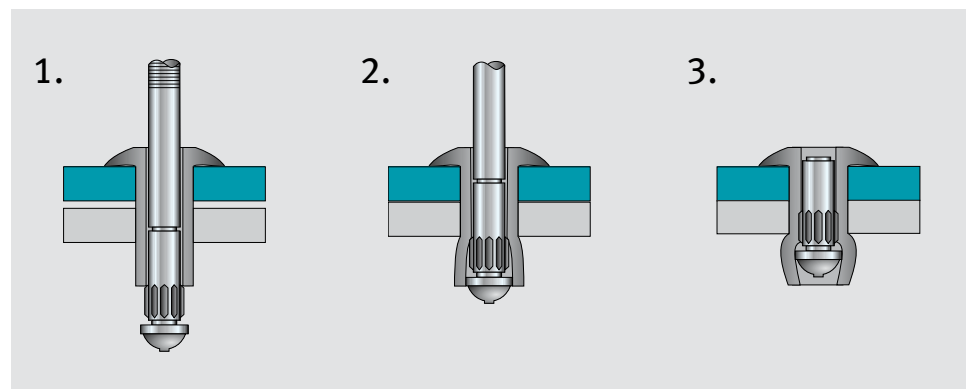
Materials:

Aluminium alloy, steel
and stainless steel

Headforms:

Protruding, large flange and
countersunk

Typical placing sequence



Please visit our website www.avdel-global.com for fastener placing animations and technical data.

Assembly applications

- Automotive
- Building industries
- Commercial vehicles
- Domestic appliances
- Heating and ventilation

Car seat base



Vehicle mud flaps



Step ladder



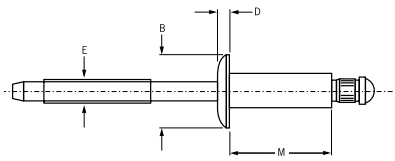
Q Rivet SSPQ / SSLQ / SSCQ



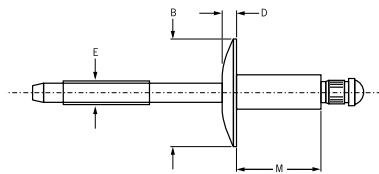
English	Français	Deutsch	Italiano	Español
Body: Steel* Zinc plated	Corps: Acier* Revêtement zingué	Hülse: Stahl* verzinkt	Corpo: Acciaio* Zincati	Cuerpo: Acero* Zincado
Stem: Steel** Zinc plated	Tige: Acier** Revêtement zingué	Dorn: Stahl** verzinkt	Gambo: Acciaio** Zincati	Vástago: Acero** Zincado

*: BS 3111 Type 0 SAE 1006 DIN 1654 QSt 32-3

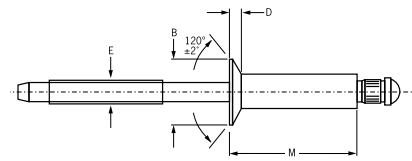
** : BS3111 Type 1 SAE 1038 DIN 1654 Cq35



Q Rivet SSPQ
Protruding head / Tête bombée /
Flachrundkopf / Testa tonda /
Cabeza alomada



Q Rivet SSLQ
Large flange / Tête large /
Flachrundkopf, extragroß /
Testa larga / Cabeza ancha



Q Rivet SSCQ
Countersunk / Tête fraisée
Senkkopf / Testa svasata
Cabeza avellanada

Ø nom.	Ø			Ø		M max.	Ø E ref.	SSPQ Protruding head			SSLQ Large flange			SSCQ Countersunk																
	min.	mid. ¹⁾	max.	min.	max.			Ø B	D	Part No. /ref	Ø B	D	Part No. /ref	Ø B	D	Part No. /ref														
1/8" (3.2 mm)			.062	.129	.133	.212	.075	.250 ±.012	.042	-04-01	.375 ±.015	.065	-04-02	.226	.032	-04-02														
		.063	.093			.125																								
		.094	.140			.187																								
		.126	.187			.250													.400											
		.188	.250			.312													.462											
		.251	.312			.375													.535											
		.313	.375			.437													.602											
		.376	.437			.500													.670											
	5/32" (4.0 mm)		.062			.093											.125	.160	.164	.300	.094	.312 ±.016	.050	.469 ±.020	.075	-05-02	.281	.040	-05-02	
		.094	.140	.187																										
		.126	.187	.250			.425																							
		.188	.250	.312			.487																							
		.251	.312	.375			.550																							
		.376	.437	.500			.695																							
3/16" (4.8 mm)		.062	.093	.125	.192	.196	.325	.114	.375 ±.019	.057	.625 ±.025	.092	-06-02	.344	.050	-06-02														
		.126	.187	.250																										
		.188	.250	.312														.512												
		.251	.312	.375														.575												
		.376	.437	.500														.700												
		.501	.562	.625														.850												
		.626	.687	.750														.980												
		.751	.812	.875														1.110												

all dimensions in inches / en pouces / alle Maße in Zoll / in pollici / en pulgadas

1) Mandrels break flush with rivet head at mid. grip (except -04-01s, which break at .062) / La tige rompt affleurante à la tête du rivet en milieu de plage de serrage (sauf pour -04-01s qui rompt à .062) / Bei mittlerem Klemmbereich (mid.) reißt der Dorn bündig mit dem Nietkopf ab (außer -04-01, der bei .062 abreißt) / Q Rivet rottura del chiodo a livello della testa del rivetto per grip medio (eccetto -04-01s rottura a .062) / El punto de rotura del Q Rivet es a ras con la cabeza del remache en su grip intermedio (excepto el -04-01s. que rompe a .062)



An Acument™ Global Technologies Company



www.avdel-global.com

© 2007 Acument Intellectual Properties, LLC

10.2007, page 1/2

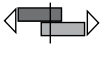

Data shown is subject to change without prior notice as a result of continuous product development and improvement policy.
Your local Avdel representative is at your disposal should you need to confirm latest information.

Q Rivet SSPQ / SSLQ / SSCQ

Ø nom.						M max.	Ø E ref.	SSPQ Protruding head			SSLQ Large flange			SSCQ Countersunk									
	min.	mid. ¹⁾	max.	min.	max.			Ø B	D max.	Part No. /ref SSPQ-	Ø B	D max.	Part No. /ref SSLQ-	Ø B ±.007	D ref.	Part No. /ref SSCQ-							
1/4" (6.4 mm)	.062	.093	.125	.257	.261	.375	.151	.500 ±.025	.077	.750 ±.025	.107	.468	.071	-08-02	-08-04	-08-06	-08-08	-08-10	-08-12	-08-14	-08-16	-08-18	-08-20
	.126	.187	.250			.500								-08-04	-08-06	-08-08	-08-10	-08-12	-08-14	-08-16			
	.251	.312	.375			.625								-08-06	-08-08	-08-10	-08-12	-08-14	-08-16				
	.376	.437	.500			.750								-08-08	-08-10	-08-12	-08-14	-08-16					
	.501	.562	.625			.900								-08-10	-08-12	-08-14	-08-16						
	.626	.687	.750			1.030								-08-12	-08-14	-08-16							
	.751	.812	.875			1.160								-08-14	-08-16								
	.876	.937	1.000			1.290								-08-16									
	1.001	1.062	1.125			1.420																	
	1.126	1.187	1.250			1.550																	

all dimensions in inches / en pouces / alle Maße in Zoll / in pollici / en pulgadas

1) Mandrels break flush with rivet head at mid. grip (except -04-01s, which break at .062) / La tige rompt affleurante à la tête du rivet en milieu de plage de serrage (sauf pour -04-01s qui rompt à .062) / Bei mittlerem Klemmbereich (mid.) reißt der Dorn bündig mit dem Nietkopf ab (außer -04-01, der bei .062 abreißt) / Q Rivet rottura del chiodo a livello della testa del rivetto per grip medio (eccetto -04-01s rottura a .062) / El punto de rotura del Q Rivet es a ras con la cabeza del remache en su grip intermedio (excepto el -04-01s. que rompe a .062)

Ø nom.		
	lbf ²⁾	lbf ²⁾
1/8" (3.2 mm)	500	400
5/32" (4.0 mm)	700	550
3/16" (4.8 mm)	1050	825
1/4" (6.4 mm)	1750	1450

2) typical values / valeurs moyennes / typische Werte / Valori tipici / resistencias máximas recomendadas



An Acument™ Global Technologies Company

www.avdel-global.com

© 2007 Acument Intellectual Properties, LLC

10.2007, page 2/2

Data shown is subject to change without prior notice as a result of continuous product development and improvement policy.
Your local Avdel representative is at your disposal should you need to confirm latest information.