

# Q Rivet

Structural breakstem fasteners with an internal interference lock and a weatherproof feature.



## Key features and benefits

- Interference lock formed by a splined stem provides powerful locking strength and hole filling
- Weatherproof fastener because the splined stem plugs the entire length of the shell
- High shear and tensile strength
- All stainless steel option for high corrosion resistance and applications requiring elevated temperatures

## Specifications

Sizes:

3.2 mm to 6.4 mm  
(1/8" to 1/4")

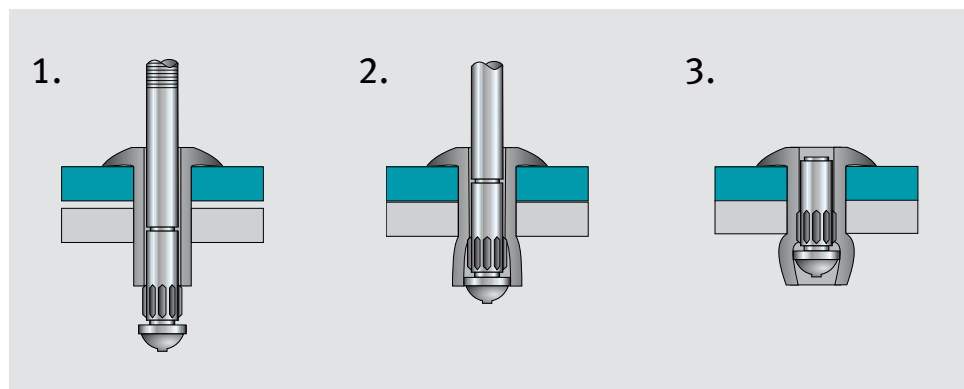
Materials:

Aluminium alloy, steel  
and stainless steel

Headforms:

Protruding, large flange and  
countersunk

## Typical placing sequence



Please visit our website [www.avdel-global.com](http://www.avdel-global.com) for fastener placing animations and technical data.

## Assembly applications

- Automotive
- Building industries
- Commercial vehicles
- Domestic appliances
- Heating and ventilation

Car seat base



Vehicle mud flaps



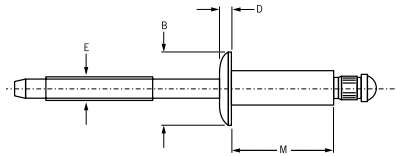
Step ladder



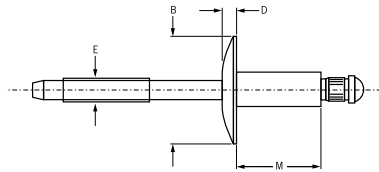
# Q Rivet AAPQ / AALQ / AACQ



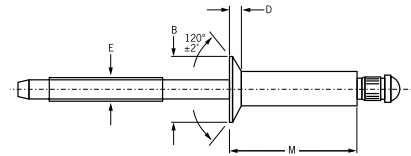
English	Français	Deutsch	Italiano	Español
Body: Aluminium 5052 Natural	Corps: Aluminium 5052 Brut	Hülse: Aluminium 5052 Blank	Corpo: Alluminio 5052 Nessuna finitura	Cuerpo: Aluminio 5052 Natural
Stem: Aluminium 7178 Natural	Tige: Aluminium 7178 Brut	Dorn: Aluminium 7178 Blank	Gambo: Alluminio 7178 Nessuna finitura	Vástago: Aluminio 7178 Natural



**Q Rivet AAPQ**  
Protruding head / Tête bombée /  
Flachrundkopf / Testa tonda /  
Cabeza alomada



**Q Rivet AALQ**  
Large flange / Tête large /  
Flachrundkopf, extragroß /  
Testa larga / Cabeza ancha



**Q Rivet AACQ**  
Countersunk / Tête fraisée  
Senkkopf / Testa svasata  
Cabeza avellanada

ø nom.						M max.	ø E ref.	AAPQ Protruding head			AALQ Large flange		AACQ Countersunk						
	min.	mid. <sup>1)</sup>	max.	min.	max.			max.	ø B	D max.	Part No. /ref AAPQ-	ø B	D max.	Part No. /ref AALQ-	ø B ±.007	D ref.	Part No. /ref AACQ-		
1/8" (3.2 mm)			.062	.129	.133	.212	.075	.250 ±.012	.042	-04-01	.375 ±.015	.065	-04-02	.226	.032	-04-03			
	.063	.093	.125			.275											-04-04	-04-04	-04-04
	.094	.125	.187			.337											-04-05	-04-06	-04-05
	.126	.187	.250			.400											-04-06	-04-07	-04-06
	.188	.250	.312			.462											-04-07	-04-08	-04-07
	.251	.312	.375			.535											-04-08		-04-08
	.313	.375	.437			.602													
	.376	.437	.500			.670													
	5/32" (4.0 mm)	.062	.093			.125											.160	.164	.300
.126		.187	.250	.425	-05-06	-05-06	-05-06												
.251		.312	.375	.550	-05-08	-05-08	-05-08												
.376		.437	.500	.695															
3/16" (4.8 mm)	.062	.093	.125	.192	.196	.325	.114	.375 ±.019	.057	-06-02	.625 ±.025	.092	-06-04	.344	.050	-06-04			
	.126	.187	.250			.450				-06-06			-06-06			-06-06			
	.251	.312	.375			.575				-06-08			-06-08			-06-08			
	.376	.437	.500			.700				-06-10			-06-10			-06-10			
	.501	.562	.625			.850				-06-12			-06-12			-06-12			
	.626	.687	.750			.980				-06-14			-06-14			-06-14			
	.751	.812	.875			1.110													

all dimensions in inches / en pouces / alle Maße in Zoll / in pollici / en pulgadas

1) Mandrels break flush with rivet head at mid. grip (except -04-01s, which break at .062) / La tige rompt affleurante à la tête du rivet en milieu de plage de serrage (sauf pour -04-01s qui rompt à .062) / Bei mittlerem Klemmbereich (mid.) reißt der Dorn bündig mit dem Nietkopf ab (außer -04-01, der bei .062 abreißt) / Q Rivet rottura del chiodo a livello della testa del rivetto per grip medio (eccetto -04-01s rottura a .062) / El punto de rotura del Q Rivet es a ras con la cabeza del remache en su grip intermedio (excepto el -04-01s. que rompe a .062)



An Acument™ Global Technologies Company



www.avdel-global.com

© 2007 Acument Intellectual Properties, LLC

09.2007, page 1/2



Data shown is subject to change without prior notice as a result of continuous product development and improvement policy.  
Your local Avdel representative is at your disposal should you need to confirm latest information.

# Q Rivet AAPQ / AALQ / AACQ

Ø nom.						M max.	Ø E ref.	AAPQ Protruding head			AALQ Large flange			AACQ Countersunk			
	min.	mid. <sup>1)</sup>	max.	min.	max.			max.	Ø B	D max.	Part No. /ref AAPQ-	Ø B	D max.	Part No. /ref AALQ-	Ø B ±.007	D ref.	Part No. /ref AACQ-
1/4" (6.4 mm)	.062	.093	.125	.257	.261	.375	.151	.500 ±.025	.077	.750 ±.025	.107	-08-02	.468	.071	-08-02		
	.126	.187	.250			.500										-08-04	-08-04
	.251	.312	.375			.625										-08-06	-08-06
	.376	.437	.500			.750										-08-08	-08-08
	.501	.562	.625			.900										-08-10	-08-10
	.626	.687	.750			1.030										-08-12	-08-12
	.751	.812	.875			1.160										-08-14	-08-14
	.876	.937	1.000			1.290										-08-16	-08-16

all dimensions in inches / en pouces / alle Maße in Zoll / in pollici / en pulgadas

1) Mandrels break flush with rivet head at mid. grip (except -04-01s, which break at .062) / La tige rompt affleurante à la tête du rivet en milieu de plage de serrage (sauf pour -04-01s qui rompt à .062) / Bei mittlerem Klemmbereich (mid.) reißt der Dorn bündig mit dem Nietkopf ab (außer -04-01, der bei .062 abreißt) / Q Rivet rottura del chiodo a livello della testa del rivetto per grip medio (eccetto -04-01s rottura a .062) / El punto de rotura del Q Rivet es a ras con la cabeza del remache en su grip intermedio (excepto el -04-01s. que rompe a .062)

Ø nom.		
	lbf <sup>2)</sup>	lbf <sup>2)</sup>
1/8" (3.2 mm)	225	250
5/32" (4.0 mm)	325	325
3/16" (4.8 mm)	500	450
1/4" (6.4 mm)	850	750

2) typical values / valeurs moyennes / typische Werte / Valori tipici / resistencias máximas recomendadas



An Acument™ Global Technologies Company

www.avdel-global.com

© 2007 Acument Intellectual Properties, LLC

09.2007, page 2/2

Data shown is subject to change without prior notice as a result of continuous product development and improvement policy.  
Your local Avdel representative is at your disposal should you need to confirm latest information.