

Q Rivet

Structural breakstem fasteners with an internal interference lock and a weatherproof feature.



Key features and benefits

- Interference lock formed by a splined stem provides powerful locking strength and hole filling
- Weatherproof fastener because the splined stem plugs the entire length of the shell
- High shear and tensile strength
- All stainless steel option for high corrosion resistance and applications requiring elevated temperatures

Specifications

Sizes:

3.2 mm to 6.4 mm
(1/8" to 1/4")

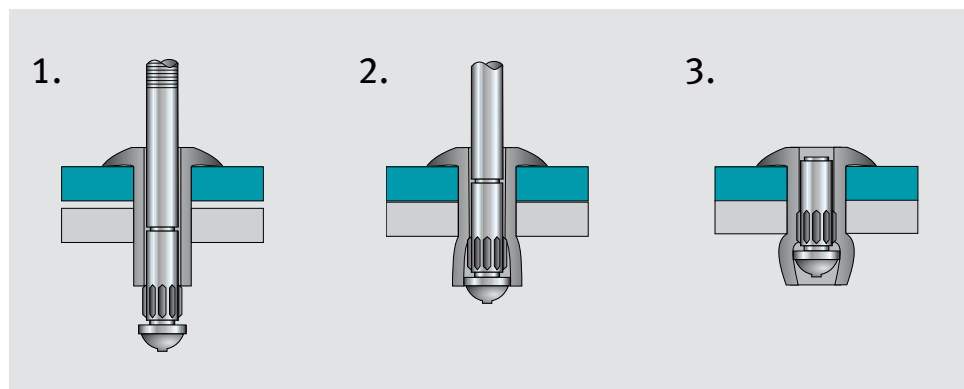
Materials:

Aluminium alloy, steel
and stainless steel

Headforms:

Protruding, large flange and
countersunk

Typical placing sequence



Please visit our website www.avdel-global.com for fastener placing animations and technical data.

Assembly applications

- Automotive
- Building industries
- Commercial vehicles
- Domestic appliances
- Heating and ventilation

Car seat base



Vehicle mud flaps



Step ladder



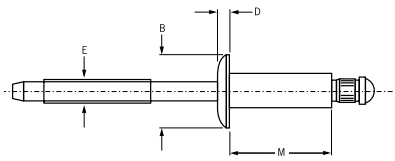
Q Rivet CCPQ / CCLQ / CCCQ



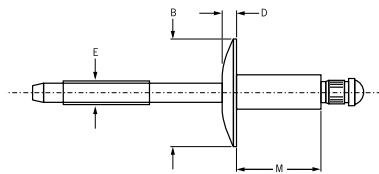
English	Français	Deutsch	Italiano	Español
Body: Stainless steel* Natural	Corps: Inox* Brut	Hülse: Edelstahl* Unbehandelt	Corpo: Acciaio inox* Nessuna finitura	Cuerpo: Acero inoxidable* Natural
Stem: Stainless steel** Natural	Tige: Inox** Brut	Dorn: Edelstahl** Unbehandelt	Gambo: Acciaio inox** Nessuna finitura	Vástago: Acero inoxidable** Natural

*: BS 970 302S31 AISI302

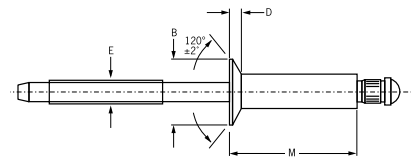
** : A286



Q Rivet CCPQ
Protruding head / Tête bombée /
Flachrundkopf / Testa tonda /
Cabeza alomada



Q Rivet CCLQ
Large flange / Tête large /
Flachrundkopf, extragroß /
Testa larga / Cabeza ancha



Q Rivet CCCQ
Countersunk / Tête fraisée
Senkkopf / Testa svasata
Cabeza avellanada

Ø nom.	Ø			Ø		M max.	Ø E ref.	CCPQ Protruding head			CCLQ Large flange			CCCQ Countersunk						
	min.	mid. ¹⁾	max.	min.	max.			Ø B	D	Part No. /ref	Ø B	D	Part No. /ref	Ø B	D	Part No. /ref				
1/8" (3.2 mm)			.062	.129	.133	.212	.075	.250 ±.012	.042	-04-01	.375 ±.015	.065	-04-02	.226	.032	-04-03				
		.063	.093			.125				.275							-04-04	-04-05	-04-06	
		.094	.140			.187				.337							-05-02	-05-03	-05-04	-05-06
		.126	.187			.250				.400							-06-02	-06-04	-06-06	-06-08
		.188	.250			.312				.462							-06-04	-06-06	-06-08	
		.251	.312			.375				.535							-06-06	-06-08		
5/32" (4.0 mm)		.062	.093	.125	.160	.164	.094	.312 ±.016	.050	-05-02	.469 ±.020	.075	-05-04	.281	.040	-05-06				
		.094	.140	.187						.362							-06-02	-06-04	-06-06	-06-08
		.126	.187	.250						.425							-06-04	-06-06	-06-08	
		.251	.312	.375						.550							-06-06	-06-08		
3/16" (4.8 mm)		.062	.093	.125	.192	.196	.114	.375 ±.019	.057	-06-02	.625 ±.025	.092	-06-04	.344	.050	-06-06				
		.126	.187	.250						.450							-06-06	-06-08		
		.251	.312	.375						.575							-06-08			
		.376	.437	.500						.700										

all dimensions in inches / en pouces / alle Maße in Zoll / in pollici / en pulgadas

1) Mandrels break flush with rivet head at mid. grip (except -04-01s, which break at .062) / La tige rompt affleurante à la tête du rivet en milieu de plage de serrage (sauf pour -04-01s qui rompt à .062) / Bei mittlerem Klemmbereich (mid.) reißt der Dorn bündig mit dem Nietkopf ab (außer -04-01, der bei .062 abreißt) / Q Rivet rottura del chiodo a livello della testa del rivetto per grip medio (eccetto -04-01s rottura a .062) / El punto de rotura del Q Rivet es a ras con la cabeza del remache en su grip intermedio (excepto el -04-01s. que rompe a .062)



An Acument™ Global Technologies Company



www.avdel-global.com

© 2007 Acument Intellectual Properties, LLC

10.2007, page 1/2



Data shown is subject to change without prior notice as a result of continuous product development and improvement policy.
Your local Avdel representative is at your disposal should you need to confirm latest information.

Q Rivet CCPQ / CCLQ / CCCQ

Ø nom.						M max.	Ø E ref.	CCPQ Protruding head			CCLQ Large flange			CCCQ Countersunk		
	min.	mid. ¹⁾	max.	min.	max.			Ø B	D max.	Part No. /ref CCPQ-	Ø B	D max.	Part No. /ref CCLQ-	Ø B ±.007	D ref.	Part No. /ref CCCQ-
1/4" (6.4 mm)	.062	.093	.125	.257	.261	.375	.151	.500 ±.025	.077				.468	.071	-08-02	
	.126	.187	.250			.500									-08-04	
	.251	.312	.375			.625									-08-06	
	.376	.437	.500			.750									-08-08	
	.501	.562	.625			.900									-08-10	

all dimensions in inches / en pouces / alle Maße in Zoll / in pollici / en pulgadas

1) Mandrels break flush with rivet head at mid. grip (except -04-01s, which break at .062) / La tige rompt affleurante à la tête du rivet en milieu de plage de serrage (sauf pour -04-01s qui rompt à .062) / Bei mittlerem Klemmbereich (mid.) reißt der Dorn bündig mit dem Nietkopf ab (außer -04-01, der bei .062 abreißt) / Q Rivet rottura del chiodo a livello della testa del rivetto per grip medio (eccetto -04-01s rottura a .062) / El punto de rotura del Q Rivet es a ras con la cabeza del remache en su grip intermedio (excepto el -04-01s. que rompe a .062)

Ø nom.		
	lbf ²⁾	lbf ²⁾
1/8" (3.2 mm)	700	600
5/32" (4.0 mm)	1050	1000
3/16" (4.8 mm)	1650	1300
1/4" (6.4 mm)	2450	2250

2) typical values / valeurs moyennes / typische Werte / Valori tipici / resistencias máximas recomendadas



An Acument™ Global Technologies Company

www.avdel-global.com

© 2007 Acument Intellectual Properties, LLC

10.2007, page 2/2

Data shown is subject to change without prior notice as a result of continuous product development and improvement policy.
Your local Avdel representative is at your disposal should you need to confirm latest information.